

ALCHIP™-MZA 系列

- 表面安装
- 低 Z
- 耐清洗
- RoHS指令适应品

MZA  
↑ 低 Z 化  
MVV p102



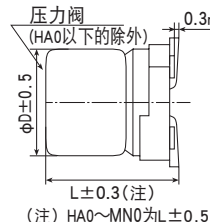
- 额定电压 6.3 ~ 100V。
- 低阻抗、保证 105°C 2,000 ~ 5,000 小时。
- 可对应耐振构造产品。
- 符合 AEC-Q200。详情请另行咨询。

规格表

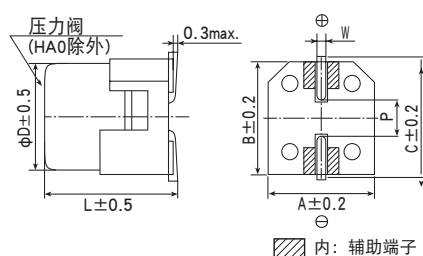
| 项目                | 性能   |  |
|-------------------|--|--|
| 工作温度范围            | -55~+105°C   |  |
| 额定电压范围            | 6.3~100V <sub>dc</sub>   |  |
| 静电容量容许差           | ±20%(M) (20°C、120Hz)   |  |
| 漏电流               | I ≤ 0.01CV 或者 3μA 中任意一个较大值<br>I: 漏电流 (μA)、C: 静电容量 (μF)、额定电压 (V <sub>dc</sub> ) (20°C、2分值)  |  |
| 损失角正切值 (tan δ)    | 在下表的数值以下<br>额定电压(V <sub>dc</sub> ) 6.3V 10V 16V 25V 35V 50V 63V 80V 100V<br>tan δ (Max.) D61~JA0 0.26 0.19 0.16 0.14 0.12 0.10 0.08 0.08 —<br>KE0~MN0 — — — 0.16 0.14 0.12 0.12 0.10 0.10<br>但是, 超过 1,000 μF 的每增加 1,000 μF tan δ 设定增加 0.02。 (20°C、120Hz) |  |
| 温度特性 (阻抗比 Max右表值) | 额定电压 (V <sub>dc</sub> ) 6.3V 10V 16V 25V 35V 50V 63V 80V 100V<br>Z(-25°C) / Z(+20°C) 2 2 2 2 2 2 2 2 2<br>Z(-40°C) / Z(+20°C) 3 3 3 3 3 3 3 3 3<br>Z(-55°C) / Z(+20°C) 4 4 4 3 3 3 3 3 3 (120Hz)   |  |
| 耐久性               | 在 105°C 环境中, 连续加载额定电压规定时间后待, 温度恢复到 20°C 进行测量时, 应满足以下要求。<br>规定时间 D61~JA0 : 2,000 小时<br>KE0~MN0 : 5,000 小时<br>静电容量变化率 ≤ 初始值的 ±30%<br>损失角正切值 ≤ 初始规格值的 200%<br>漏电流 ≤ 初始规格值   |  |
| 容许清洗条件            | 请参照 Technical note 第 6 项 「基板清洗」  |  |

尺寸图 (CE32 形) [mm]

- 端子代码: A
- 尺寸代码: D61~MN0

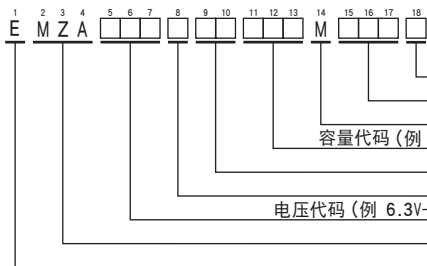


- 端子代码: G (耐振构造)
- 尺寸代码: HA0~MN0 (带辅助端子)



| 尺寸代码 | D    | L    | A    | B    | C    | W       | P   |
|------|------|------|------|------|------|---------|-----|
| D61  | 4    | 5.8  | 4.3  | 4.3  | 5.1  | 0.5~0.8 | 1.0 |
| E61  | 5    | 5.8  | 5.3  | 5.3  | 5.9  | 0.5~0.8 | 1.4 |
| F61  | 6.3  | 5.8  | 6.6  | 6.6  | 7.2  | 0.5~0.8 | 1.9 |
| F80  | 6.3  | 7.7  | 6.6  | 6.6  | 7.2  | 0.5~0.8 | 1.9 |
| HA0  | 8    | 10.0 | 8.3  | 8.3  | 9.0  | 0.7~1.1 | 3.1 |
| JA0  | 10   | 10.0 | 10.3 | 10.3 | 11.0 | 0.7~1.1 | 4.5 |
| KE0  | 12.5 | 13.5 | 13.0 | 13.0 | 13.7 | 1.0~1.3 | 4.2 |
| KG5  | 12.5 | 16.0 | 13.0 | 13.0 | 13.7 | 1.0~1.3 | 4.2 |
| LH0  | 16   | 16.5 | 17.0 | 17.0 | 18.0 | 1.0~1.3 | 6.5 |
| LN0  | 16   | 21.5 | 17.0 | 17.0 | 18.0 | 1.0~1.3 | 6.5 |
| MH0  | 18   | 16.5 | 19.0 | 19.0 | 20.0 | 1.0~1.3 | 6.5 |
| MN0  | 18   | 21.5 | 19.0 | 19.0 | 20.0 | 1.0~1.3 | 6.5 |

品番体系



产品型号代码的详细介绍请参考「产品型号的表示方法 (贴片型)」。

额定纹波电流频率修正系数

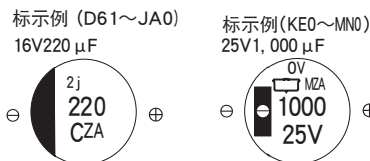
纹波频率与标准品一览表的规定值相异时, 请使用小于乘以下表系数所得之值

频率修正系数

| 尺寸代码    | 频率 (Hz)     |      |      |      |       |
|---------|-------------|------|------|------|-------|
|         | 静电容量 (μF)   | 120  | 1k   | 10 k | 100 k |
| D61~JA0 | 3.3~4.7     | 0.35 | 0.70 | 0.90 | 1.00  |
|         | 10~100      | 0.40 | 0.75 | 0.90 | 1.00  |
|         | 220~470     | 0.50 | 0.85 | 0.94 | 1.00  |
|         | 680~1,500   | 0.60 | 0.87 | 0.95 | 1.00  |
| KE0~MN0 | 110~200     | 0.40 | 0.75 | 0.90 | 1.00  |
|         | 220~620     | 0.50 | 0.85 | 0.94 | 1.00  |
|         | 680~1,800   | 0.60 | 0.87 | 0.95 | 1.00  |
|         | 2,400~3,000 | 0.75 | 0.90 | 0.95 | 1.00  |
|         | 3,900       | 0.85 | 0.95 | 0.98 | 1.00  |

\* 铝电解电容器由于在纹波电流叠加时自我发热, 温度上升而老化, 每升温 5°C 寿命减少一半。要想保持长寿命请在使用过程中降低纹波电流。

标示



产品的额定电压标示 (D61~JA0)

| 额定电压 (V <sub>dc</sub> ) | 6.3 | 10 | 16 | 25 | 35 | 50 | 63 | 80 |
|-------------------------|-----|----|----|----|----|----|----|----|
| 标示符号                    | j   | A  | C  | E  | V  | H  | J  | K  |

ALCHIP™-MZA 系列

◆标准品一览表

| WV<br>(Vdc) | Cap<br>(μF) | 尺寸<br>代码 | 阻抗<br>(Ω <sub>max</sub> /100kHz) |       | 额定纹波电流<br>(mA <sub>rms</sub> /<br>105°C, 100kHz) | 产品型号               | WV<br>(Vdc) | Cap<br>(μF) | 尺寸<br>代码 | 阻抗<br>(Ω <sub>max</sub> /100kHz) |                    | 额定纹波电流<br>(mA <sub>rms</sub> /<br>105°C, 100kHz) | 产品型号               |
|-------------|-------------|----------|----------------------------------|-------|--|--------------------|-------------|-------------|----------|----------------------------------|--------------------|--|--------------------|
|             |             |          | 20°C                             | -40°C |  |                    |             |             |          | 20°C                             | -40°C              |  |                    |
| 6.3         | 22          | D61      | 1.35                             | -     | 90   | EMZA6R3ADA220MD61G | 35          | 330         | JA0      | 0.08                             | -                  | 850  | EMZA350□DA331MJA0G |
|             | 47          | D61      | 1.35                             | -     | 90   | EMZA6R3ADA470MD61G |             | 620         | KE0      | 0.060                            | 0.30               | 1,320  | EMZA350□RA621MKE0S |
|             | 47          | E61      | 0.70                             | -     | 160  | EMZA6R3ADA470ME61G |             | 820         | KG5      | 0.056                            | 0.28               | 1,470  | EMZA350□RA821MKG5S |
|             | 100         | E61      | 0.70                             | -     | 160  | EMZA6R3ADA101ME61G |             | 1,200       | LH0      | 0.047                            | 0.24               | 1,820  | EMZA350□DA122MLH0S |
|             | 100         | F61      | 0.36                             | -     | 240  | EMZA6R3ADA101MF61G |             | 1,600       | MH0      | 0.045                            | 0.23               | 2,060  | EMZA350□DA162MMH0S |
|             | 220         | F61      | 0.36                             | -     | 240  | EMZA6R3ADA221MF61G |             | 1,800       | LNO      | 0.034                            | 0.17               | 2,400  | EMZA350□DA182MLN0S |
|             | 330         | F80      | 0.34                             | -     | 280  | EMZA6R3ADA331MF80G |             | 2,400       | MNO      | 0.032                            | 0.16               | 2,640  | EMZA350□DA242MMN0S |
|             | 470         | HA0      | 0.16                             | -     | 600  | EMZA6R3□DA471MHA0G |             | 4.7         | D61      | 2.9                              | -                  | 60   | EMZA500ADA4R7MD61G |
|             | 1,000       | HA0      | 0.16                             | -     | 600  | EMZA6R3□DA102MHA0G |             | 10          | E61      | 1.52                             | -                  | 85   | EMZA500ADA100ME61G |
| 1,500       | JA0         | 0.08     | -                                | 850   | EMZA6R3□DA152MJA0G                               | 10                 | F61         | 0.88        | -        | 165                              | EMZA500ADA100MF61G |  |                    |
| 10          | 22          | D61      | 1.35                             | -     | 90   | EMZA100ADA220MD61G | 22          | F61         | 0.88     | -                                | 165                | EMZA500ADA220MF61G                               |                    |
|             | 33          | D61      | 1.35                             | -     | 90   | EMZA100ADA330MD61G | 33          | F80         | 0.68     | -                                | 195                | EMZA500ADA330MF80G                               |                    |
|             | 33          | E61      | 0.70                             | -     | 160  | EMZA100ADA330ME61G | 47          | F80         | 0.68     | -                                | 195                | EMZA500ADA470MF80G                               |                    |
|             | 220         | F80      | 0.34                             | -     | 280  | EMZA100ADA221MF80G | 100         | HA0         | 0.34     | -                                | 350                | EMZA500□DA101MHA0G                               |                    |
|             | 330         | HA0      | 0.16                             | -     | 600  | EMZA100□DA331MHA0G | 220         | JA0         | 0.18     | -                                | 670                | EMZA500□DA221MJA0G                               |                    |
|             | 470         | HA0      | 0.16                             | -     | 600  | EMZA100□DA471MHA0G | 330         | KE0         | 0.11     | 0.55                             | 980                | EMZA500□RA331MKE0S                               |                    |
|             | 680         | HA0      | 0.16                             | -     | 600  | EMZA100□DA681MHA0G | 430         | KG5         | 0.10     | 0.50                             | 1,090              | EMZA500□RA431MKG5S                               |                    |
|             | 1,000       | JA0      | 0.08                             | -     | 850  | EMZA100□DA102MJA0G | 620         | LH0         | 0.087    | 0.44                             | 1,320              | EMZA500□DA621MLH0S                               |                    |
| 16          | 10          | D61      | 1.35                             | -     | 90   | EMZA160ADA100MD61G | 820         | MH0         | 0.087    | 0.44                             | 1,420              | EMZA500□DA821MMH0S                               |                    |
|             | 22          | D61      | 1.35                             | -     | 90   | EMZA160ADA220MD61G | 1,000       | LNO         | 0.050    | 0.25                             | 1,910              | EMZA500□DA102MLN0S                               |                    |
|             | 22          | E61      | 0.70                             | -     | 160  | EMZA160ADA220ME61G | 1,300       | MNO         | 0.050    | 0.25                             | 2,180              | EMZA500□DA132MMN0S                               |                    |
|             | 47          | E61      | 0.70                             | -     | 160  | EMZA160ADA470ME61G | 4.7         | E61         | 4.8      | -                                | 50                 | EMZA630ADA4R7ME61G                               |                    |
|             | 47          | F61      | 0.36                             | -     | 240  | EMZA160ADA470MF61G | 10          | F61         | 2.2      | -                                | 80                 | EMZA630ADA100MF61G                               |                    |
|             | 100         | F61      | 0.36                             | -     | 240  | EMZA160ADA101MF61G | 22          | F80         | 2.1      | -                                | 120                | EMZA630ADA220MF80G                               |                    |
|             | 220         | F80      | 0.34                             | -     | 280  | EMZA160ADA221MF80G | 33          | HA0         | 0.70     | -                                | 250                | EMZA630□DA330MHA0G                               |                    |
|             | 330         | HA0      | 0.16                             | -     | 600  | EMZA160□DA331MHA0G | 47          | HA0         | 0.70     | -                                | 250                | EMZA630□DA470MHA0G                               |                    |
|             | 470         | HA0      | 0.16                             | -     | 600  | EMZA160□DA471MHA0G | 68          | HA0         | 0.70     | -                                | 250                | EMZA630□DA680MHA0G                               |                    |
| 680         | JA0         | 0.08     | -                                | 850   | EMZA160□DA681MJA0G                               | 100                | JA0         | 0.45        | -        | 400                              | EMZA630□DA101MJA0G |  |                    |
| 25          | 10          | D61      | 1.35                             | -     | 90   | EMZA250ADA100MD61G | 240         | KE0         | 0.19     | 1.54                             | 880                | EMZA630□RA241MKE0S                               |                    |
|             | 22          | E61      | 0.70                             | -     | 160  | EMZA250ADA220ME61G | 300         | KG5         | 0.17     | 1.19                             | 1,000              | EMZA630□RA301MKG5S                               |                    |
|             | 33          | E61      | 0.70                             | -     | 160  | EMZA250ADA330ME61G | 430         | LH0         | 0.15     | 1.05                             | 1,220              | EMZA630□DA431MLH0S                               |                    |
|             | 33          | F61      | 0.36                             | -     | 240  | EMZA250ADA330MF61G | 560         | MH0         | 0.12     | 0.84                             | 1,430              | EMZA630□DA561MMH0S                               |                    |
|             | 47          | F61      | 0.36                             | -     | 240  | EMZA250ADA470MF61G | 680         | LNO         | 0.085    | 0.58                             | 1,790              | EMZA630□DA681MLN0S                               |                    |
|             | 100         | F80      | 0.34                             | -     | 280  | EMZA250ADA101MF80G | 910         | MNO         | 0.070    | 0.49                             | 1,960              | EMZA630□DA911MMN0S                               |                    |
|             | 220         | HA0      | 0.16                             | -     | 600  | EMZA250□DA221MHA0G | 3.3         | E61         | 5.0      | -                                | 25                 | EMZA800ADA3R3ME61G                               |                    |
|             | 330         | HA0      | 0.16                             | -     | 600  | EMZA250□DA331MHA0G | 4.7         | F61         | 3.0      | -                                | 40                 | EMZA800ADA4R7MF61G                               |                    |
|             | 470         | JA0      | 0.08                             | -     | 850  | EMZA250□DA471MJA0G | 10          | F80         | 2.4      | -                                | 60                 | EMZA800ADA100MF80G                               |                    |
|             | 1,000       | KE0      | 0.060                            | 0.30  | 1,320  | EMZA250□RA102MKE0S | 22          | HA0         | 1.3      | -                                | 130                | EMZA800□DA220MHA0G                               |                    |
|             | 1,300       | KG5      | 0.056                            | 0.28  | 1,470  | EMZA250□RA132MKG5S | 33          | HA0         | 1.3      | -                                | 130                | EMZA800□DA330MHA0G                               |                    |
|             | 1,800       | LH0      | 0.047                            | 0.24  | 1,820  | EMZA250□DA182MLH0S | 47          | JA0         | 0.70     | -                                | 200                | EMZA800□DA470MJA0G                               |                    |
| 2,400       | MH0         | 0.045    | 0.23                             | 2,060 | EMZA250□DA242MMH0S                               | 150                | KE0         | 0.22        | 1.54     | 810                              | EMZA800□RA151MKE0S |  |                    |
| 3,000       | LNO         | 0.034    | 0.17                             | 2,400 | EMZA250□DA302MLN0S                               | 220                | KG5         | 0.17        | 1.19     | 1,000                            | EMZA800□RA221MKG5S |  |                    |
| 3,900       | MNO         | 0.032    | 0.16                             | 2,640 | EMZA250□DA392MMN0S                               | 330                | LH0         | 0.15        | 1.05     | 1,220                            | EMZA800□DA331MLH0S |  |                    |
| 35          | 4.7         | D61      | 1.35                             | -     | 90   | EMZA350ADA4R7MD61G | 430         | MH0         | 0.12     | 0.84                             | 1,430              | EMZA800□DA431MMH0S                               |                    |
|             | 10          | D61      | 1.35                             | -     | 90   | EMZA350ADA100MD61G | 470         | LNO         | 0.085    | 0.58                             | 1,790              | EMZA800□DA471MLN0S                               |                    |
|             | 10          | E61      | 0.70                             | -     | 160  | EMZA350ADA100ME61G | 680         | MNO         | 0.070    | 0.49                             | 1,960              | EMZA800□DA681MMN0S                               |                    |
|             | 22          | E61      | 0.70                             | -     | 160  | EMZA350ADA220ME61G | 110         | KE0         | 0.28     | 2.24                             | 740                | EMZA101□RA111MKE0S                               |                    |
|             | 33          | F61      | 0.36                             | -     | 240  | EMZA350ADA330MF61G | 130         | KG5         | 0.21     | 1.68                             | 900                | EMZA101□RA131MKG5S                               |                    |
|             | 47          | F61      | 0.36                             | -     | 240  | EMZA350ADA470MF61G | 200         | LH0         | 0.18     | 1.44                             | 1,090              | EMZA101□DA201MLH0S                               |                    |
|             | 100         | F80      | 0.34                             | -     | 280  | EMZA350ADA101MF80G | 270         | MH0         | 0.15     | 1.2                              | 1,280              | EMZA101□DA271MMH0S                               |                    |
|             | 100         | HA0      | 0.16                             | -     | 600  | EMZA350□DA101MHA0G | 330         | LNO         | 0.11     | 0.88                             | 1,580              | EMZA101□DA331MLN0S                               |                    |
|             | 220         | HA0      | 0.16                             | -     | 600  | EMZA350□DA221MHA0G | 430         | MNO         | 0.091    | 0.73                             | 1,690              | EMZA101□DA431MMN0S                               |                    |

□内为端子代码。