

DRS·DRR 7000C 8000C

Washable



RoHS Compliant

Hyper-Miniature Dip Rotary Switches (7.5mm sq.) 〔PC Mount〕

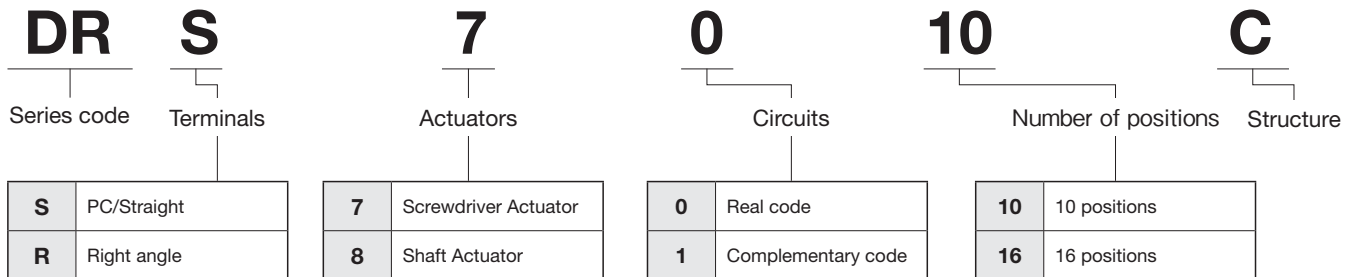
■ Features

- 1. Hyper-miniature Size(7.5mm sq.)**
Designed for high density mounting.
- 2. Process Sealed**
- 3. Gold Plated Contacts**
- 4. Clearly Visible Legends and Position Indicator**

■ Specifications

Rating	Switching	Max.	30mA 15VDC
		Min.	1μA 20mVDC
	Non-switching	100mA 50VDC	
Contact resistance		100mΩ maximum	
Dielectric strength		250VAC, 60s	
Insulation resistance		1,000MΩ minimum (100VDC)	
Load life		20,000 steps 30mA 15VDC	
Operating torque		49mN·m [500gf·cm] maximum	
Operating temperature range		-25~+85°C	
Storage temperature range		-40~+85°C	

■ Part Numbering



■ Table of Part Numbers

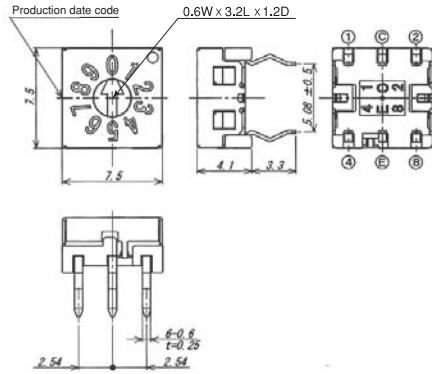
Circuit function	positions	Actuators	Screwdriver Actuator		Shaft Actuator	
		Terminal style	PC Straight	Right-Angle	PC Straight	Right Angle
Real code	10		DRS7010C	DRR7010C	DRS8010C	★ DRR8010C
	16		DRS7016C	DRR7016C	DRS8016C	DRR8016C
Complementary code	10		DRS7110C	DRR7110C	★ DRS8110C	★ DRR8110C
	16		DRS7116C	DRR7116C	DRS8116C	★ DRR8116C

★ : Made-to-order products.

DRS7010C
DRS7110C



Straight

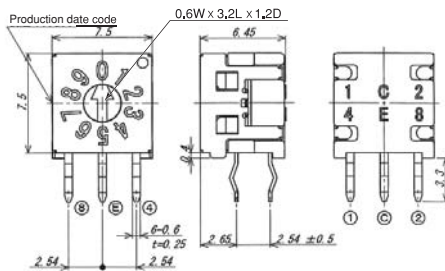


Terminal numbers are shown on the bottom of the switch.

DRR7010C
DRR7110C



Right Angle

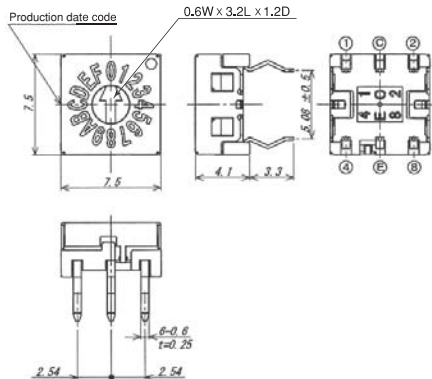


Terminal numbers are shown on the bottom of the switch.

DRS7016C
DRS7116C



Straight

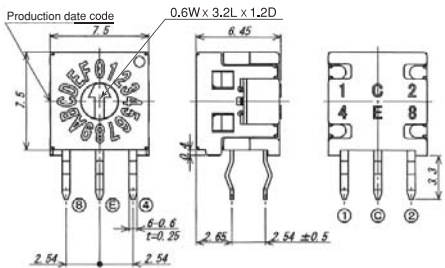


Terminal numbers are shown on the bottom of the switch.

DRR7016C
DRR7116C



Right Angle



Terminal numbers are shown on the bottom of the switch.

● Real code Actuator color : Yellow

Part No.	Position	Terminal #			
		1	2	4	8
DRS7010C DRR7010C	0				
	1	●			
	2		●		
	3	●	●		
	4			●	
	5	●		●	
	6		●	●	
	7	●	●	●	
	8				●
9	●			●	

● Complementary code Actuator color : Red

Part No.	Position	Terminal #			
		1	2	4	8
DRS7110C DRR7110C	0	●	●	●	●
	1		●	●	●
	2	●		●	●
	3			●	●
	4	●	●		●
	5		●		●
	6	●			●
	7		●	●	●
	8	●	●	●	
9		●	●		

● Real code Actuator color : Yellow

Part No.	Position	Terminal #			
		1	2	4	8
DRS7016C DRR7016C	0				
	1	●			
	2		●		
	3	●	●		
	4			●	
	5	●		●	
	6		●	●	
	7	●	●	●	
	8				●
	9	●			●
	A		●		●
B	●	●		●	
C			●	●	
D	●		●	●	
E		●	●	●	
F	●	●	●	●	

● Complementary code Actuator color : Red

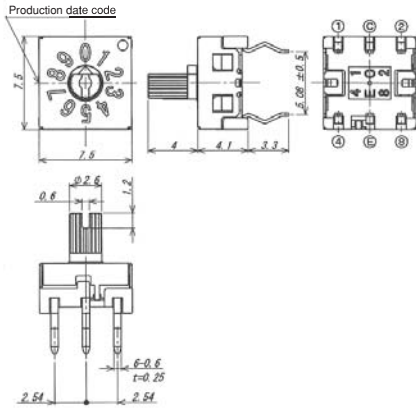
Part No.	Position	Terminal #			
		1	2	4	8
DRS7116C DRR7116C	0	●	●	●	●
	1		●	●	●
	2	●		●	●
	3			●	●
	4	●	●		●
	5		●		●
	6	●			●
	7		●	●	●
	8	●	●	●	
	9		●	●	
	A	●		●	
	B		●	●	
	C	●	●		
	D		●		
	E	●			
F					

Ⓜ : Terminal E is ground terminal ●...Connection to common (C).

DRS8010C
DRS8110C



Straight



Terminal numbers are shown on the bottom of the switch.

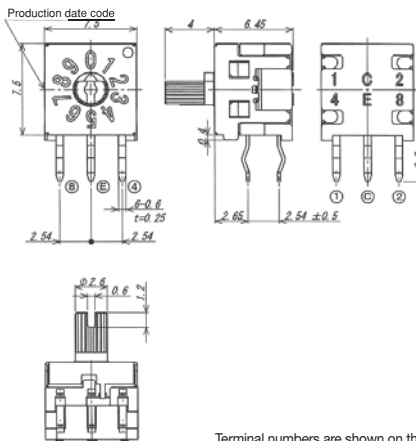
● Real code Actuator color : Yellow

Part No.	Position	Terminal #			
		1	2	4	8
DRS8010C DRR8010C	0				
	1	●			
	2		●		
	3	●	●		
	4			●	
	5	●		●	
	6		●	●	
	7	●	●	●	
	8				●
	9	●			●

DRR8010C
DRR8110C



Right Angle



Terminal numbers are shown on the bottom of the switch.

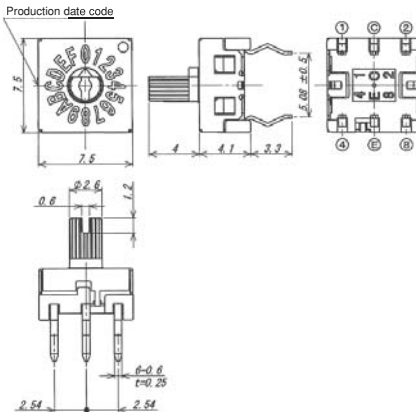
● Complementary code Actuator color : Red

Part No.	Position	Terminal #			
		1	2	4	8
DRS8110C DRR8110C	0	●	●	●	●
	1		●	●	●
	2	●		●	●
	3			●	●
	4	●	●		●
	5		●		●
	6	●			●
	7				●
	8	●	●	●	
	9		●	●	

DRS8016C
DRS8116C



Straight



Terminal numbers are shown on the bottom of the switch.

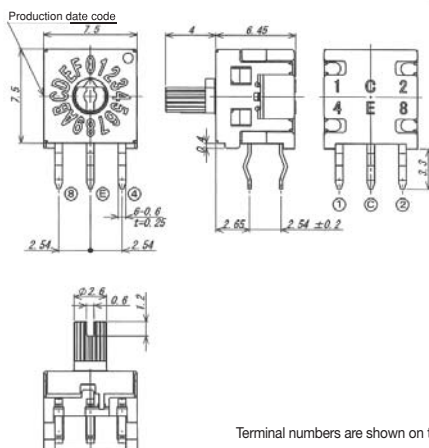
● Real code Actuator color : Yellow

Part No.	Position	Terminal #			
		1	2	4	8
DRS8016C DRR8016C	0				
	1	●			
	2		●		
	3	●	●		
	4			●	
	5	●		●	
	6		●	●	
	7	●	●	●	
	8				●
	9	●			●
	A		●		●
	B	●	●		●
	C			●	●
	D	●		●	●
E		●	●	●	
F	●	●	●	●	

DRR8016C
DRR8116C



Right Angle



Terminal numbers are shown on the bottom of the switch.

● Complementary code Actuator color : Red

Part No.	Position	Terminal #			
		1	2	4	8
DRS8116C DRR8116C	0	●	●	●	●
	1		●	●	●
	2	●		●	●
	3			●	●
	4	●	●		●
	5		●		●
	6	●			●
	7				●
	8	●	●	●	
	9		●	●	
	A	●		●	
	B			●	
	C	●	●		
	D		●		
E	●				
F					

ⓔ : Terminal E is ground terminal

●···Contact closed

■ PCB Footprints

(Top view)

Terminal style	PC Straight	Right Angle
Footprint dimensions		

■ Packaging Specifications

Series	DRS7000C/8000C	DRR7000C/8000C
Stick-Tube Specifications		

※ Order in 50 piece increments.

■ Soldering Specifications

- (1) Manual Soldering
350°C, 3 sec. Max
- (2) Wave Soldering
Immerse the switch two times for the portion from the front end of terminal to the back side of PCB for 5 to 6 seconds in the 260±3°C soldering pot.

■ Flux Cleaning

After soldering, wait until the switches cool down to room temperature (30°C or below) before washing. If the switches are cleaned while still above 30°C, a vacuum will occur which will cause the cleaning solution to be sucked into the switches.

■ Switch Operation

Use a screwdriver for setting position of the actuator.