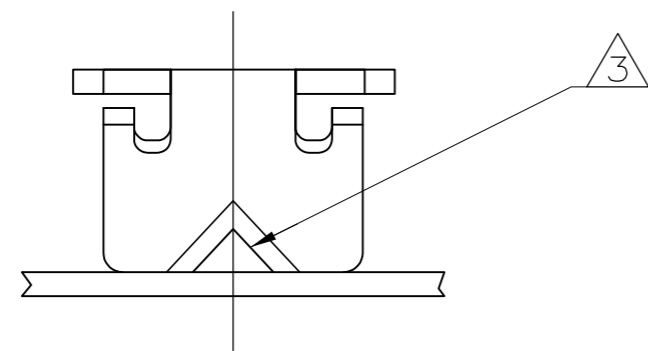


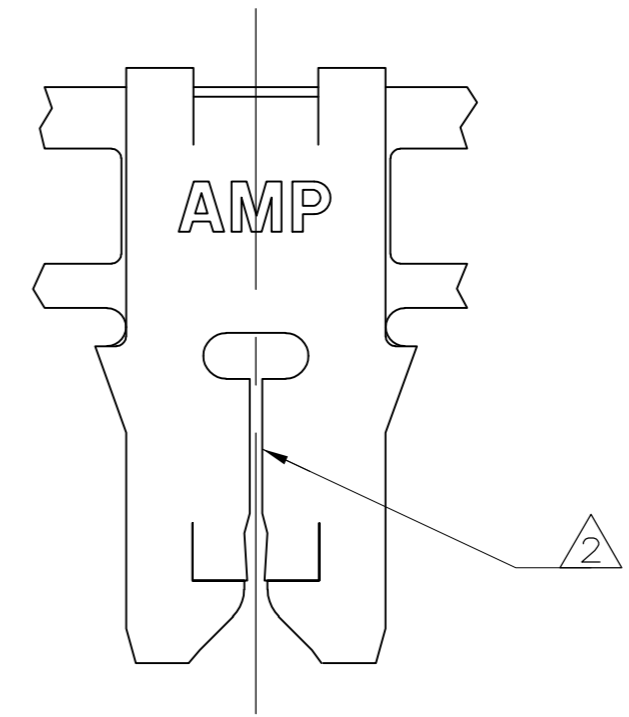
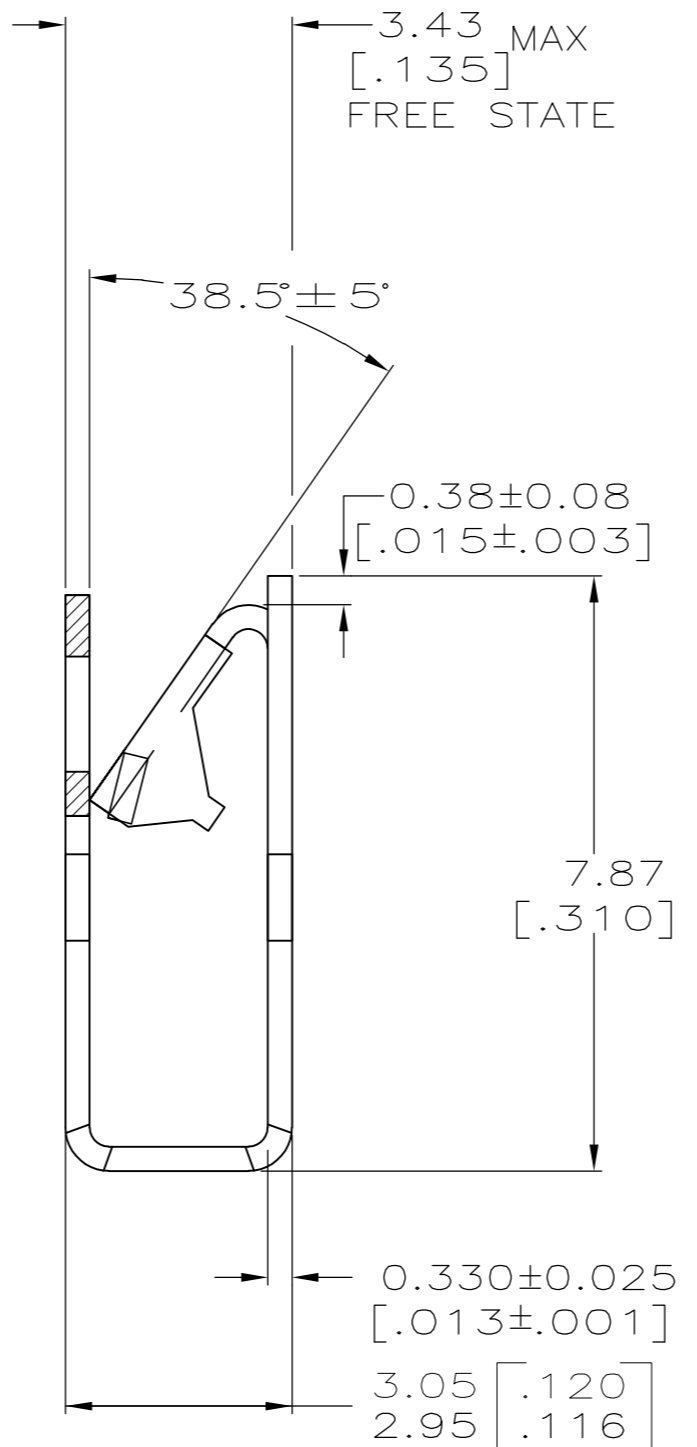
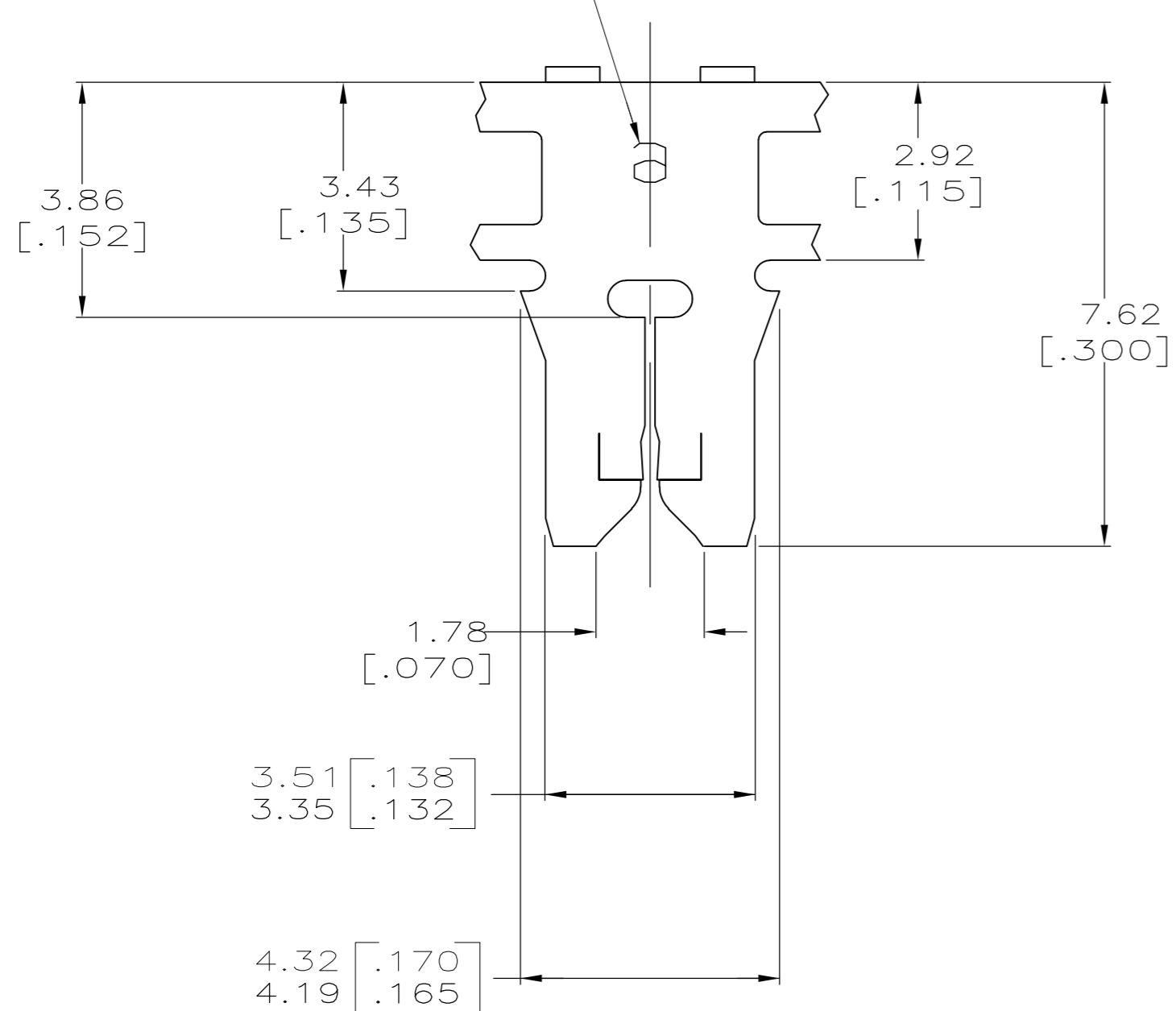
THIS DRAWING IS UNPUBLISHED. RELEASED FOR PUBLICATION
 © COPYRIGHT - By - ALL RIGHTS RESERVED.

LOC		DIST		REVISIONS			
P	LTR	DESCRIPTION		DATE	DWN	APVD	
AF	50	AG7	UPDATED PER PART STATUS		07OCT14	PKS	RRP

- 1 CONTINUOUS STRIP ON REELS WITH TERMINALS LOCATED ON 5.59±0.08 [.220±.003] CENTERS.
- △2 SLOT TERMINATES EITHER A SINGLE OR DOUBLE MAGNET WIRE OF THE SAME SIZE AND TYPE. COPPER RANGE: 0.25-0.36mm [#30-#27] AWG. ALUMINUM RANGE: 0.32-0.45mm [#28-#25] AWG.
- △3 POKE-IN ACCEPTS A 0.5-0.9mm² [#20-#18] AWG SOLID OR FUSED STRANDED LEAD WIRE.
- △4 SPECIAL REEL QUANTITY - SPAIN PRODUCTION ONLY.
- △5 PRELIMINARY - NOT FOR PRODUCTION.
- △6 NICKEL UNDERPLATE OPTIONAL
- △7 PAPER SPLICED - RESTRICTED FOR BSH-GERMANY
- △8 RETURNABLE PLASTIC REELING FOR SUPPLY WITHIN BRAZIL ONLY



IDENTIFICATION NUMBER 6 FOR MAGNET WIRE RANGE



STANDARD	PLASTIC REEL W/ PAPER	TIN PLATE	△6	BRASS	△8	1-62429-0
STANDARD	WITH PAPER	TIN PLATE		BRASS	△7	62429-9
STANDARD	WITH PAPER	TIN PLATE		PHOS-BRONZE	△5	62429-7
REVERSE	WITH PAPER	TIN PLATE		BRASS	△5	62429-6
STANDARD	WITH PAPER	△4		BRASS		62429-5
STANDARD	PLASTIC REEL W/PAPER			BRASS		62429-4
STANDARD	WITHOUT PAPER	TIN PLATE		BRASS		62429-2
STANDARD	WITH PAPER		△6	BRASS		62429-1
REELING DIRECTION	REELING	FINISH		MATERIAL		PART NUMBER

THIS DRAWING IS A CONTROLLED DOCUMENT.

DIMENSIONS: INCHES	TOLERANCES UNLESS OTHERWISE SPECIFIED:	DWN 03OCT1995 MICHAEL S. FEHER	
	0 PLC ± -	CHK 16OCT1995 RICHARD GRZYBOWSKI	
	1 PLC ± -	APVD 16OCT1995 NELSON E. NEFF	
	2 PLC ± 0.25 [.010]	NAME	
3 PLC ± -	PRODUCT SPEC	108-2012	TERMINAL, POKE-IN, 300 SERIES MAG-MATE™
4 PLC ± -	APPLICATION SPEC	114-2046	SIZE CAGE CODE DRAWING NO
ANGLES ± -	FINISH	SEE TABLE	A2 00779 C=62429
MATERIAL SEE TABLE	SEE TABLE	WEIGHT -	RESTRICTED TO -
		CUSTOMER DRAWING	SCALE 10:1 SHEET 1 of 1 REV AG7