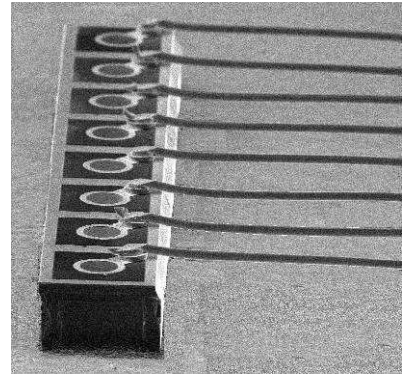


Features

- Large active area convenient for optical coupling
- Low dark current
- Respond to 1310nm, C-Band and L-Band
- High reliability

Applications

- Laser diode and LED power monitors
- Near infrared sensors
- Power meters
- Optical measurement and sensing

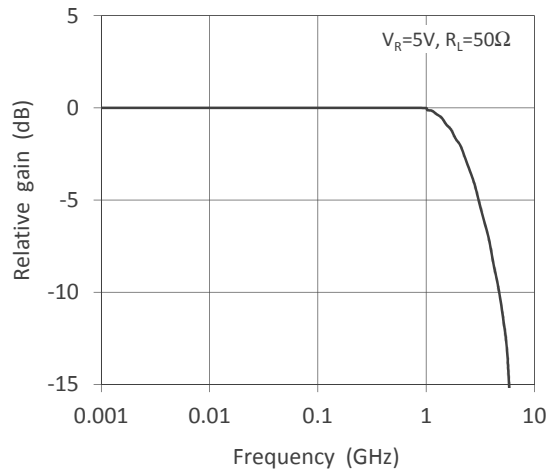
**Absolute Maximum Ratings**

Parameter	Symbol	Value	Unit	Note
Reverse voltage	V_R	20	V	
Maximum optical power input	P_{imax}	10	mW	
Forward current	I_F	10	mA	
Operating temperature	T_{opr}	-40 to +85	°C	Avoid dew condensation
Storage temperature	T_{stg}	-40 to +85	°C	Avoid dew condensation

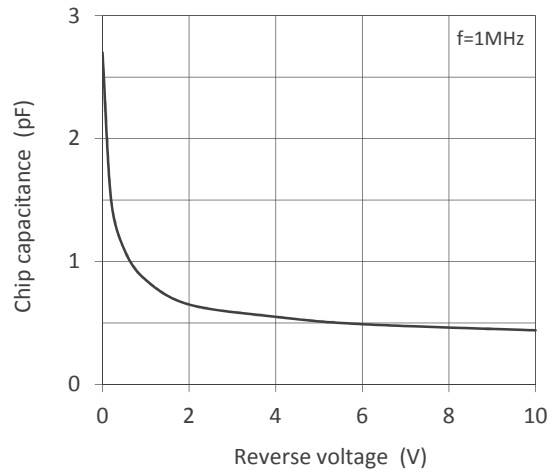
Electrical and Optical Characteristics ($T_a=25^\circ\text{C}$ unless otherwise noted)

Parameter	Symbol	Min.	Typ.	Max.	Unit	Test Condition
Active diameter	D	80			μm	
Bandwidth	BW	1.0	2.0	-	GHz	$P_i=-10\text{dBm}$, $V_R=5\text{V}$ Small signal modulation
Responsivity	R	0.8	-	-	A/W	$\lambda=1310\text{nm}$, $V_R=5\text{V}$
		0.85	-	-		$\lambda=1550\text{nm}$, $V_R=5\text{V}$
Crosstalk	X	-	-35	-	dB	$V_R=5\text{V}$
Dark current	I_D	-	80	-	pA	$V_R=5\text{V}$
Chip capacitance	C_{chip}	-	0.6	0.8	pF	$V_R=5\text{V}$, $f=1\text{MHz}$

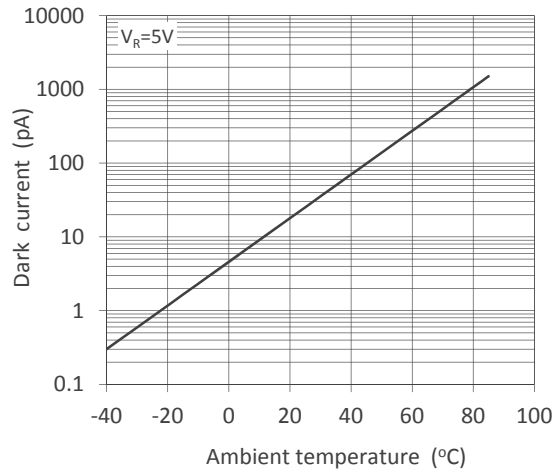
Frequency Response



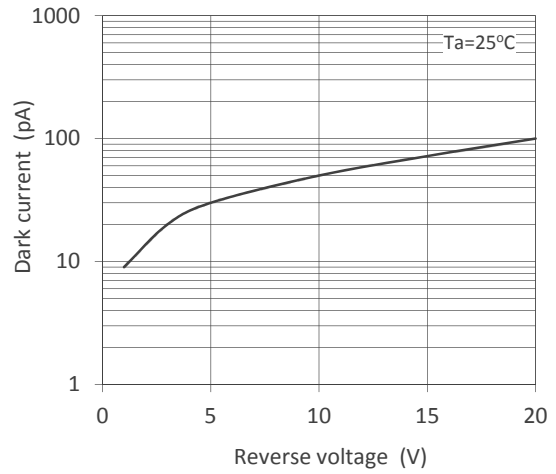
Capacitance - Reverse Voltage



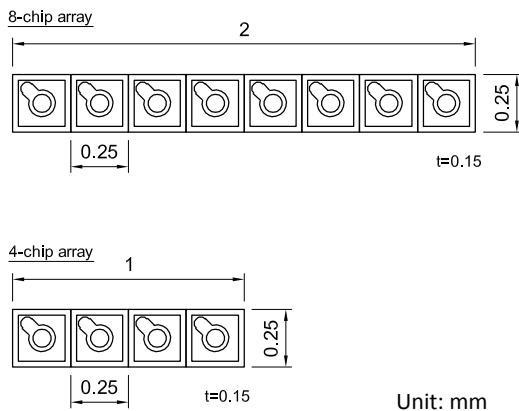
Dark Current - Ambient Temperature



Dark Current - Reverse Voltage



Chip dimensions



- Specifications , characteristics, data, materials, structures specified in this datasheet are subject to change without notice. Please refer to the latest specification before use of the products.
- Products listed in this datasheet comply with the RoHS Directive (EU2002/95/EC).

Opto-technologies for the Future



KYOSEMI CORPORATION

<http://www.kyosemi.co.jp/>

Headquarters : 949-2 Ebisucho Fushimi-ku, Kyoto 612-8201 Japan

TEL: +81-75-605-7311

Tokyo Sales Office: 24th Sky Bldg.2F, 1-34-3 Shinjuku Shinjuku-ku, Tokyo 160-0022 Japan

TEL: +81-3-5312-5360

Kansai Sales Office: 949-2 Ebisucho Fushimi-ku, Kyoto 612-8201 Japan

TEL: +81-75-605-7311

Kyosemi Opto America Corp: 4655 Old Ironsides Suite 230 Santa Clara, California 95054 USA

TEL: +1-408-492-9361

Eniwa Operation: 385-31 Toiso Eniwa-shi, Hokkaido 061-1405 Japan

TEL: +81-123-34-3111

Kamisunagawa Operation: 70-1 Kamisunagawa Kamisunagawa-cho Sorachi-gun, Hokkaido 073-0200 Japan

TEL: +81-125-62-3611