

PJS008-2005 Series

Patented

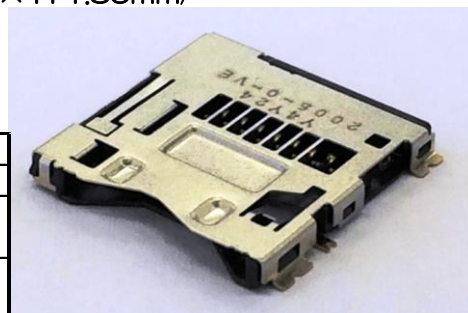
microSD Card Connector 2 Point Contact Type

◇ FEATURES

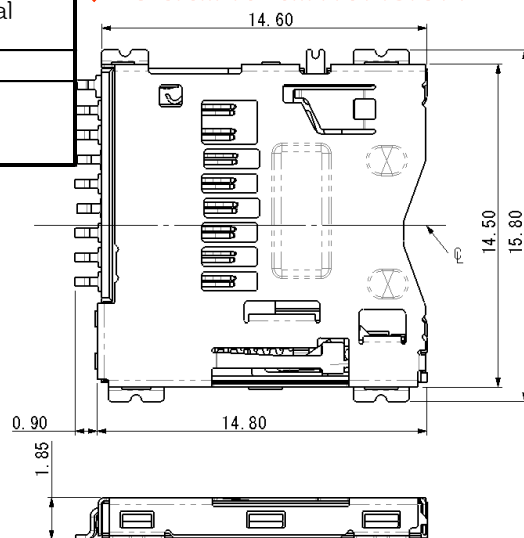
- Realized all 2-point contact for microSD card connector
 - ✓ Resonance point by vibration and shock is changed due to changing of each 2-point contact length then contact reliability is increased.
 - ✓ Improve self-cleaning function on connecting point.
- Smooth extraction function by push-in/push out of card
 - ✓ Common parts for other automotive card connector.
- Low profile and minimized design (W 14.5mm × L 14.80mm × H 1.85mm)
- Reverse mount type.
- With Card detection switch.

◇ Product specifications

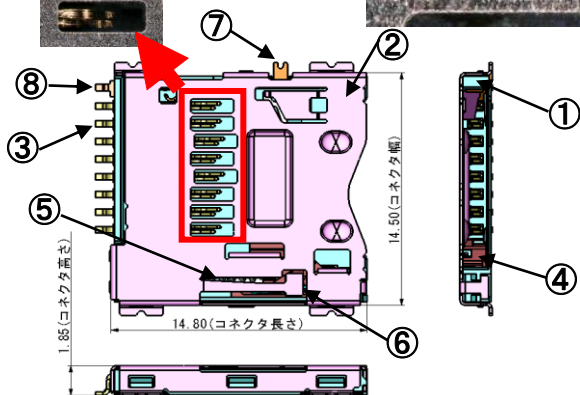
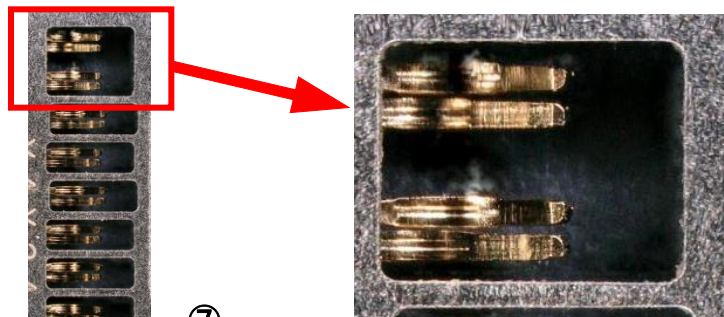
Current Rating	0.5A
Voltage Rating	AC/DC 50Vrms.
Insulation Resistance	Measured across adjacent contacts at 500VDC. Initial:100MΩ minmum /After test:100MΩ minimum
Dielectric withstanding Voltage	Apply 500VACrms. For 1min No abnormalities. Arcing, or dielectric breakdown.
Contact Resistance	With dummy card inserted.Apply 1mA,20mV maxmum. Initial resistance:100mΩmaximum After test:Maximum increase is 40mΩ from initial resistance.
Operating Temper	-25deg.c~+85deg.c
Insertion/Extraction Wear Life	Office Environment : 10,000cycles Harsh Environment : 3,000cycles



◇ Outline dimension

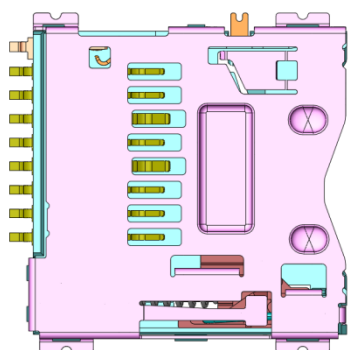


◇ Contact structure and Bill of materials

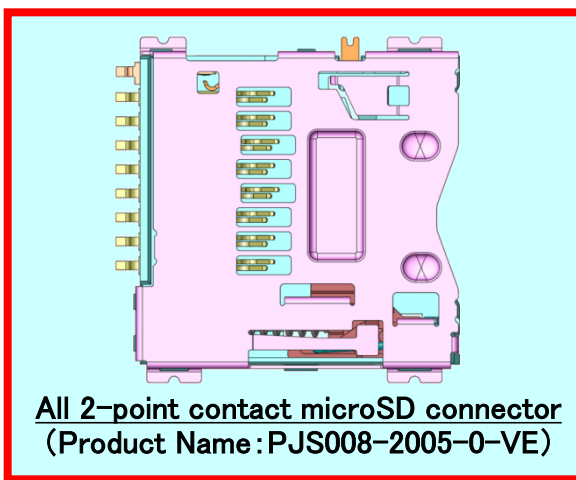


8	カード認識スイッチ2 (Card Detection Switch 2)	1	PB	Ni-Au Plating
7	カード認識スイッチ1 (Card Detection Switch 1)	1	PB	Ni-Au Plating
6	ロックピン (Lock Pin)	1	SUS	---
5	コイルスプリング (Coil Spring)	1	SWP	Ni Plating
4	イジェクタ (Ejector)	1	PA9T	Black (UL94V-0)
3	コンタクト (Contact)	8	PB	Ni-Au Plating
2	メタルシェル (Metal Shell)	1	SUS	Ni-Au Plating
1	インシュレータ (Insulator)	1	LCP	Black (UL94V-0)
部品番号 ITEM No.	部品名 Description	個数 Qty.	材質 Material	記事 Content

◇Realized all 2-point contact for microSD card connector.

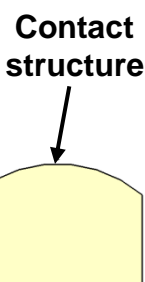
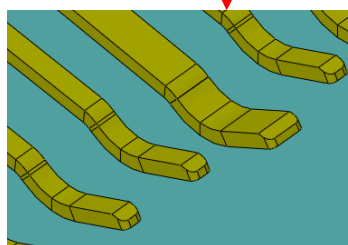
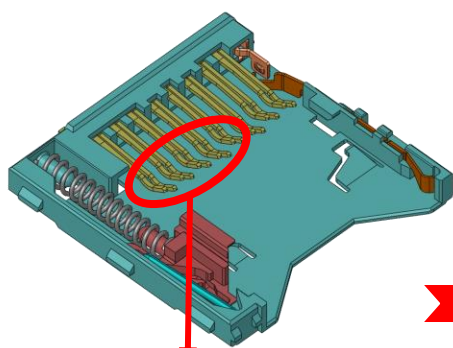


Current model of micro SD card
(Product Name : PJS008-2004-0-VE)

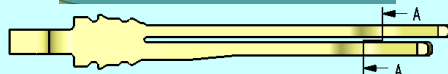
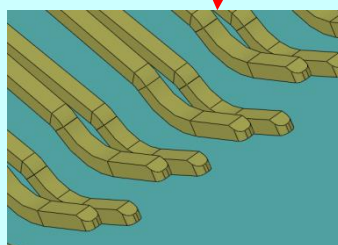
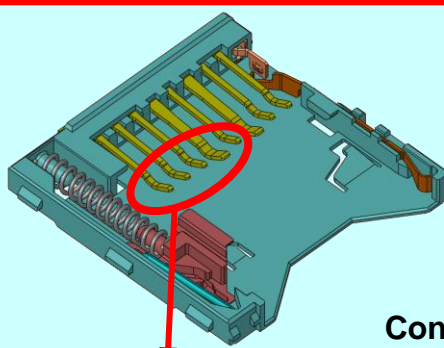


All 2-point contact microSD connector
(Product Name : PJS008-2005-0-VE)

◇2-point contact structure detail



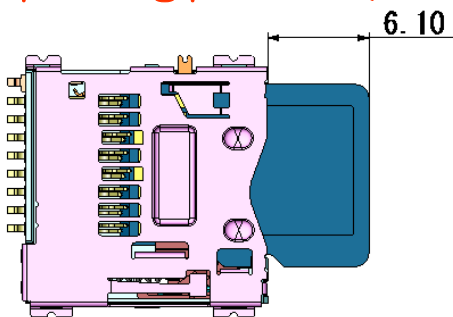
Current model of micro SD card



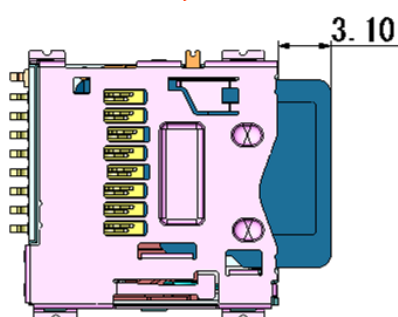
2-point for all contact

Contact structure

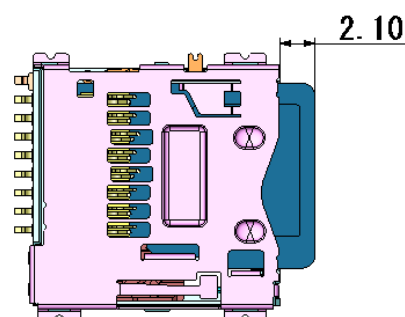
◇Operating position (Card insertion)



Card eject position



Card lock position



Card push position