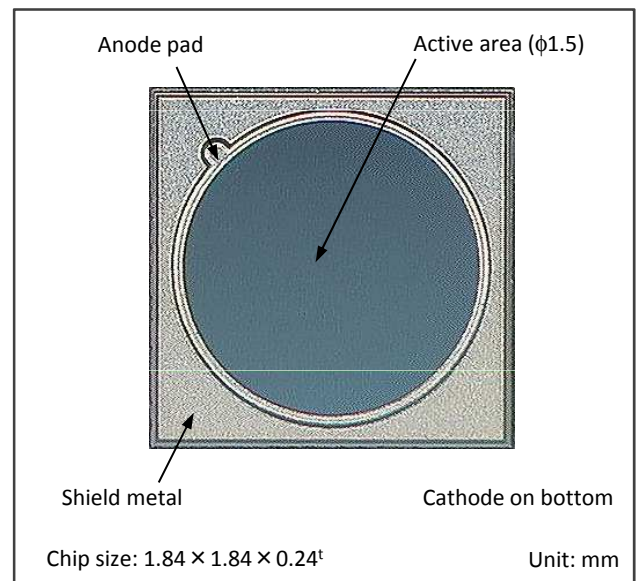


Features

- Large active diameter
- High speed response (Typ. 0.2GHz)
- High responsivity
- High reliability

Applications

- Optical fiber communications
- High speed optical measurement
- Optical sensors

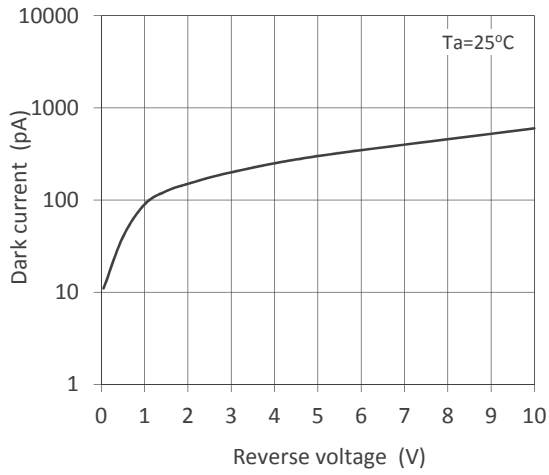
**Absolute Maximum Ratings**

Parameter	Symbol	Value	Unit	Note
Reverse voltage	V_R	20	V	
Reverse current	I_R	10	mA	
Forward current	I_F	10	mA	
Operating temperature	T_{opr}	-40 to +85	°C	Avoid dew condensation
Storage temperature	T_{stg}	-55 to +125	°C	Avoid dew condensation

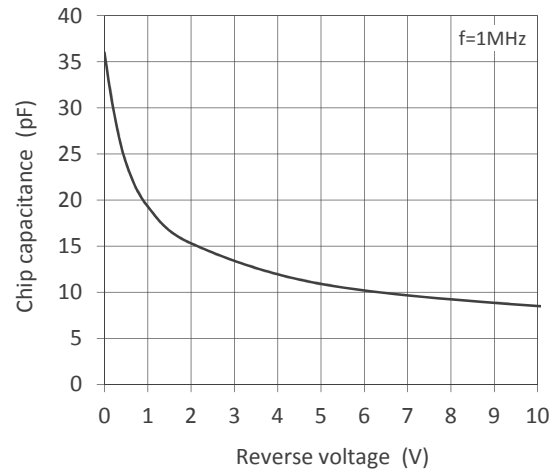
Electrical and Optical Characteristics ($T_a=25^\circ\text{C}$ unless otherwise noted)

Parameter	Symbol	Min.	Typ.	Max.	Unit	Test Condition
Active diameter	D	1.5			mm	
Sensitive wavelength	λ	400	-	1000	nm	
Bandwidth	BW	-	0.2	-	GHz	$V_R=10\text{V}$, $R_L=50\Omega$
Responsivity	R	-	0.58	-	A/W	$V_R=10\text{V}$, $\lambda=850\text{nm}$
Dark current	I_D	-	0.8	2.6	nA	$V_R=10\text{V}$
Total capacitance	C_t	-	8	12	pF	$V_R=10\text{V}$, $f=1\text{MHz}$

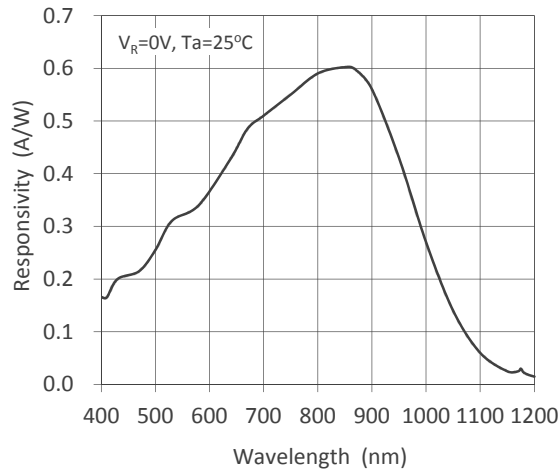
Dark Current - Reverse Voltage



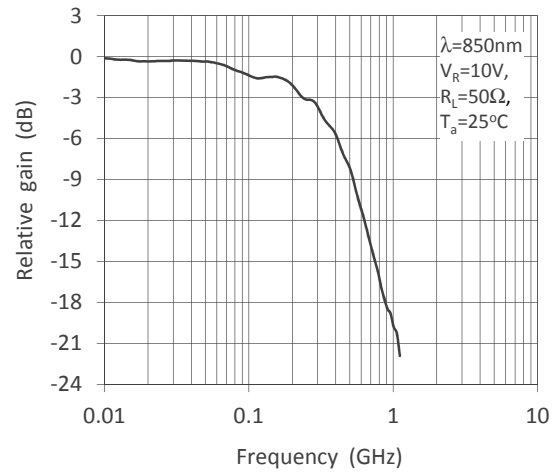
Capacitance - Reverse Voltage



Spectral Responsivity



Frequency Response



- Specifications , characteristics, data, materials, structures specified in this datasheet are subject to change without notice. Please refer to the latest specification before use of the products.
- Products listed in this datasheet comply with the RoHS Directive (EU2002/95/EC).

Opto-technologies for the Future



KYOSEMI CORPORATION

<http://www.kyosemi.co.jp/>

Headquarters : 949-2 Ebisucho Fushimi-ku, Kyoto 612-8201 Japan

TEL: +81-75-605-7311

Tokyo Sales Office: 24th Sky Bldg.2F, 1-34-3 Shinjuku Shinjuku-ku, Tokyo 160-0022 Japan

TEL: +81-3-5312-5360

Kansai Sales Office: 949-2 Ebisucho Fushimi-ku, Kyoto 612-8201 Japan

TEL: +81-75-605-7311

Kyosemi Opto America Corp: 4655 Old Ironsides Suite 230 Santa Clara, California 95054 USA

TEL: +1-408-492-9361

Eniwa Operation: 385-31 Toiso Eniwa-shi, Hokkaido 061-1405 Japan

TEL: +81-123-34-3111

Kamisunagawa Operation: 70-1 Kamisunagawa Kamisunagawa-cho Sorachi-gun, Hokkaido 073-0200 Japan

TEL: +81-125-62-3611