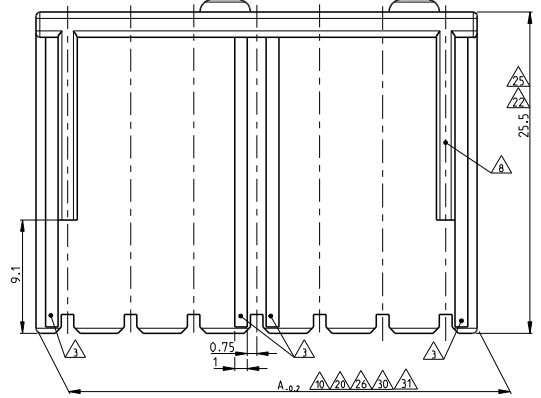
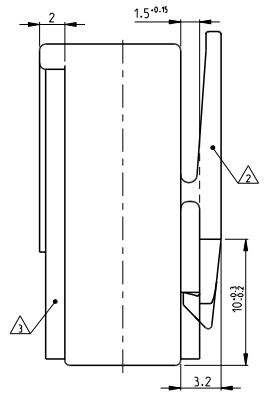
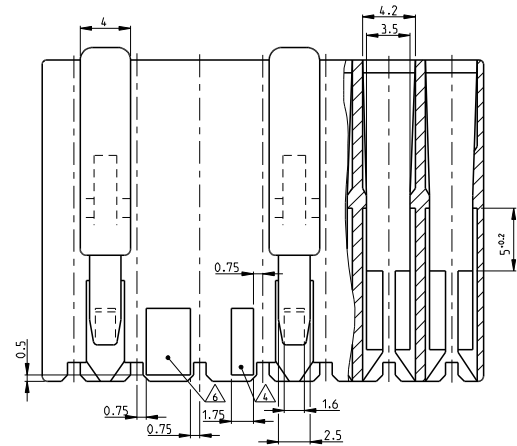
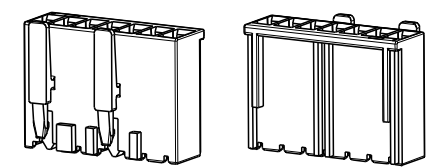
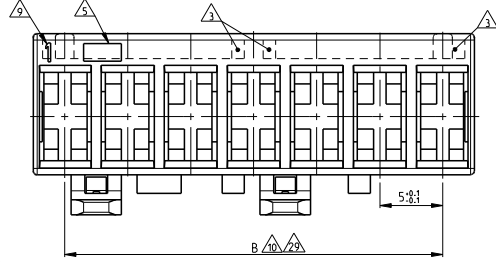
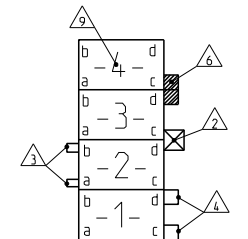
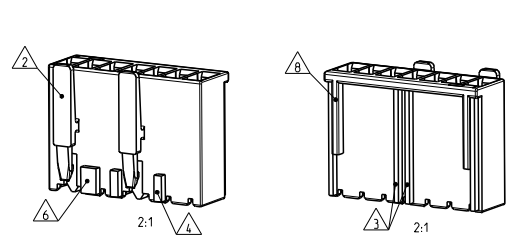


LOC	DATE	REVISIONS
AI		



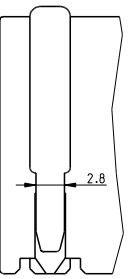
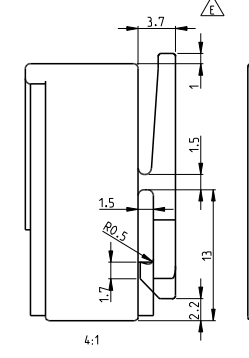
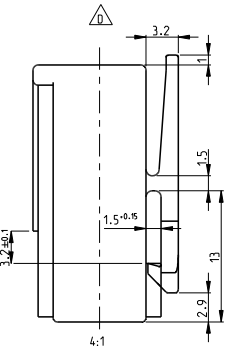
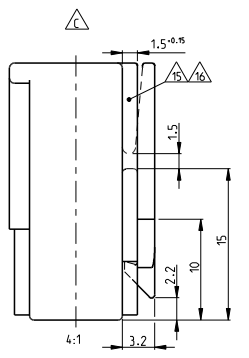
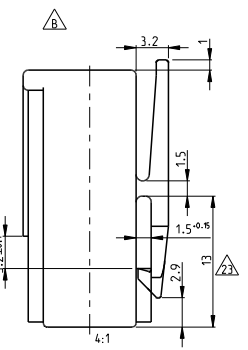
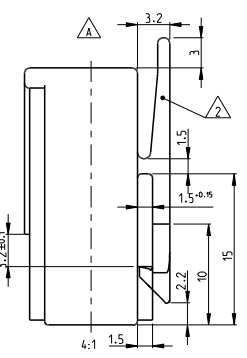
DESCRIPTION
 POSITION OF THE KEYING RIBS, POLARISATION RIBS AND THE LOCKING LATCH



SCALE 2:1

PAY ATTENTION !
 DIFFERENT LOCKING LATCHES

ALL OTHER DIMENSIONS ARE SAME

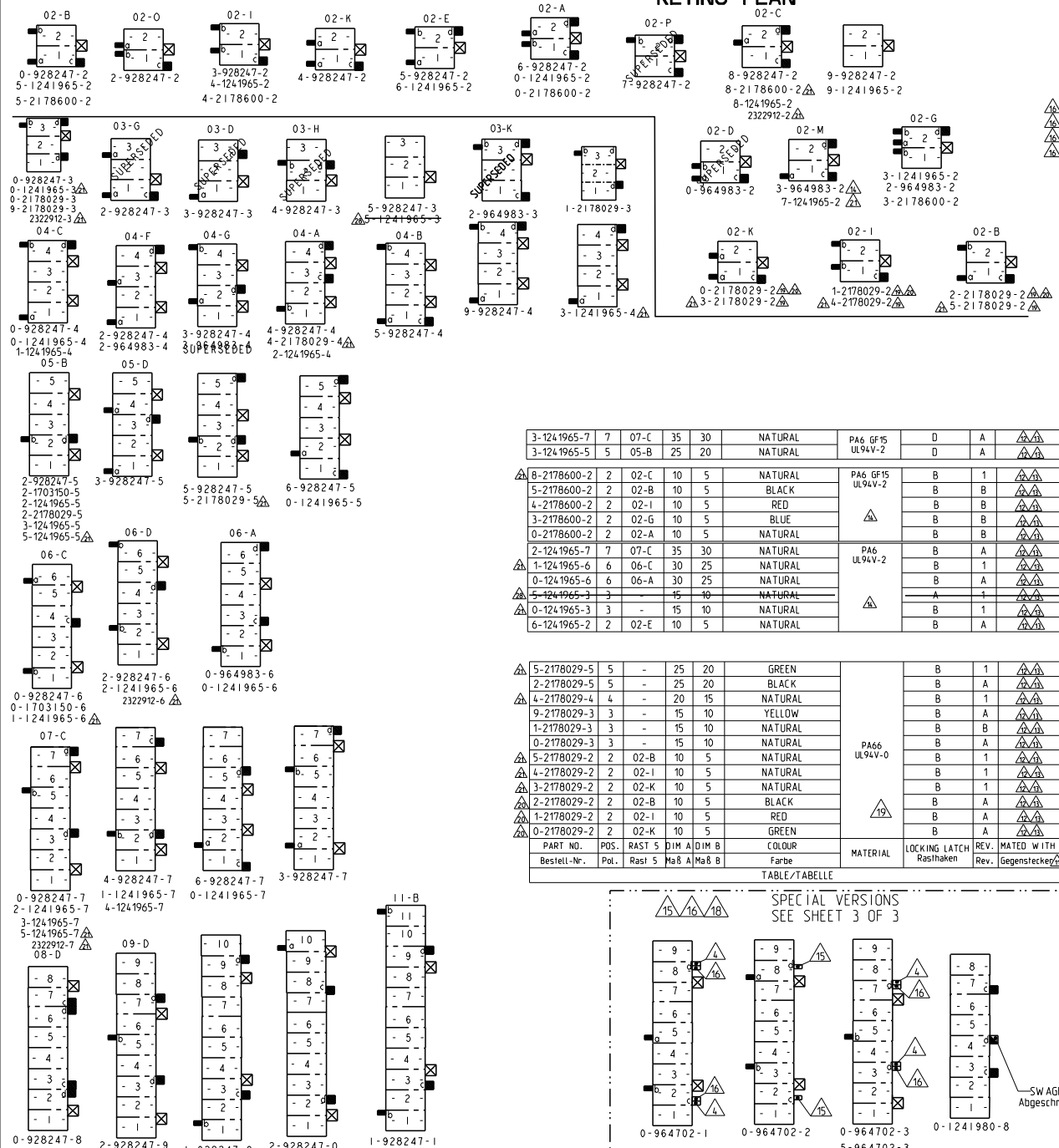


- 1 CAVITY SUITABLE TO STANDARD TIMER CONTACTS LISTED IN PROD. SPEC: 108-18049, ITEM 3.3.2
 Kammer geeignet für Standard Timer Kontakte gelistet in Prod. Spec. 108-18049, Punkt 3.3.2
- 2 LOCKING LATCH BETWEEN CAVITY NO.
 Rasthaken zwischen Kammernummer
- 3 POLARIZATION RIB POSITION "a" OR POSITION "b".
 AT CAVITY NO...
 Polarisierungsrippen (Lage "a") oder (Lage "b") versetzt bei Kammer Nr
- 4 KEYING RIB POSITION "c" OR POSITION "d".
 AT CAVITY NO...
 Kodierungsrippen nach unten (Lage "c") oder oben (Lage "d") versetzt bei Kammernummer
- 5 AREA FOR TE LOGO ACC. TO SPEC 202-36
 Bereich für TE Logo nach Spec. 202-36
- 6 WIDTH KEYING RIB BETWEEN CAVITY NO.
 Breite Kodierrippe zwischen Kammer Nr.
- 7 SUITABLE TO TAB 6.3x0.8mm AND 4.8x0.8mm ACCORDING TO DIN 46244
 Geeignet für Flachstecker 6.3x0.8mm und 4.8x0.8mm nach DIN 46244
- 8 MATING STOP BETWEEN CAVITY NO. 1 AND 2, ALSO BETWEEN THE LAST AND THE LAST BUT ONE CAVITY
 Tiefenanschlag zwischen Kammer Nr.1 und 2, ebenfalls zwischen der letzten und vorletzten Kammer
- 9 CONTACT CAVITY NO.
 Kammernummer
- 10 DIMENSION A AND DIMENSION B SEE SHEET 2 OF 3
 Maß A und Maß B siehe Blatt 2 von 3
- 11 MATED WITH TE CONNECTOR: SEE TABLE, SHEET 2 OF 3
 Passender TE Gegenstecker: siehe Tabelle, Seite 2 von 3
- 12 GENERAL SUITABLE TAB HEADER HOUSING SEE RAST 5 PERFORMANCE
 Generell passende Flachsteckerwanne, siehe RAST 5 Vorgabe
- 13 CONNECTION TO THE PC BOARD SEE DRAWING 88-9935-4
 Leiterplattenanschluß siehe Zeichnung 88-9935-4
- 14 SEE TABLE, SHEET 2 OF 3
 Siehe Tabelle, Blatt 2 von 3
- 15 MATERIAL CORRESPONDS TO THE REQUIREMENT EN 60335 (INCL. GLOW WIRE TEST 750°C WITHOUT FLAME)
- 16 WIRE TANGLING PROTECTION
- 17 WIRE TANGLING PROTECTION IN COMBINATION WITH CODING RIBS, ONLY VALID FOR VERSIONS 5-964702-3, 0-964702-3, 0-964702-1
- 18 KEYING ACC. TO RAST-5 STANDARD; COLOUR IS DIFFERENT
- 19 8 POS. SPECIAL VERSION WITH SWAGED KEYING RIB
- 20 SPECIAL MATERIAL PA66, UL 94 V0
- 21 DIMENSION "A" IS ACCEPTED WITHIN TOLERANCE +0.05/-0.20.
- 22 PRELIMINARY PART- NOT YET RELEASED FOR PRODUCTION
- 23 ONLY FOR PN 2178600-2, 3-2178600-2, 4-2178600-2, 5-2178600-2, TOLERANCE IS +0.4 -0.2, WORST CASE CAN BE OUT OF RAST STANDARD.
- 24 ONLY FOR PN 2178600-2, 3-2178600-2, 4-2178600-2, 5-2178600-2, TOLERANCE IS ±4°
- 25 ONLY FOR PN 3-1241965-5, 3-1241965-7 TOLERANCE IS +0.3 -0.2
- 26 ONLY FOR PN 3-1241965-5, 3-1241965-7 TOLERANCE IS +0.2 -0.2
- 27 ONLY FOR PN 3-1241965-5, 3-1241965-7 TOLERANCE IS +0.05 -0.2
- 28 OBSOLETE PART
- 29 ONLY FOR 4-1241965-7, TOLERANCE IS -0.3
- 30 ONLY FOR 4-1241965-7, TOLERANCE IS +0.2/-0.25
- 31 ONLY FOR 1-2178029-3, TOLERANCE IS +0.15/-0.2

THIS DRAWING IS A CONTROLLED DOCUMENT.		DATE: 13 JUL 2017	TE Connectivity
DIMENSIONAL UNIT: mm	DESIGNED BY: M. Kishor	DATE: 07-NOV-06	
	CHECKED BY: K. Munz	DATE: 07-NOV-06	
	APPROVED BY: T. Klinger		
	PRODUCT SPEC: 80-1		
	PAC: 80-1		
	PC: 80-1		
	APPLIC. SPEC: 80-1		
MATERIAL: TBD	FINISH: -	REVISION: -	RESTRICTED TO: -
	Customer Drawing	SCALE: 5:1	SHEET: 1 OF 4

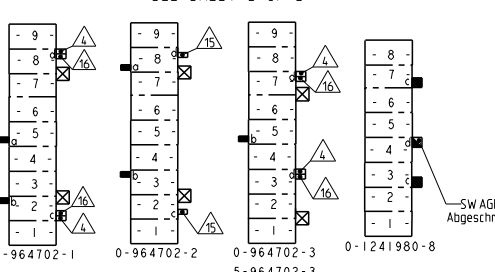
KEYING PLAN

REV. NO.	DATE	BY	APP.	DESCRIPTION
1	07-NOV-06			SEE SHEET 1



COLOUR	SUPERSEDED BY PN.	PART NO.	POS.	RAST	S	DIM A	DIM B	COLOUR	MATERIAL	LOCKING LATCH	REV.	MATED WITH	REV.	MATED WITH
		Bestell.-Nr.	Pol.	Rast	S	Maß A	Maß B	Farbe		Rasthaken	Rev.	Gegenstecker	Rev.	Gegenstecker
		7-1241965-2	2	02-M	10	5		NATURE	UL94 V-0	B	1	△△△		
		0-1241980-8	8	-	40	35		NATURE/natur	UL94V-0	-	B	△△△		
		5-964702-3		-	-	-		NATURE/natur						
		0-964702-3	9	-	45	40		NATURE/natur	UL94V-2	C	E	△△△		
		0-964702-2		-	-	-		BLACK/schwarz						
		0-964702-1		-	-	-		NATURE/natur						
		0-964983-6	6	06-A	30	25		WHITE/weiß						
		3-1241817-4	4	04-C	20	15		GREY/grau						
		2-964983-4	4	04-F	20	15		ORANGE/orange						
		2-1241817-3	3	03-K	15	10		GREEN/grün						
		3-964983-2	2	02-M	10	5		VIOLET/violett (liila)	UL94V-2	B	D	△△△		
		2-964983-2	2	02-G	10	5		BLUE/blau						
		0-964983-2	2	02-B	10	5		BLACK/schwarz						
		1-1241965-11	11	11-B	55	50		NATURE/natur						
		0-1241965-9	9	09-D	45	40		NATURE/natur						
		0-1241965-8	8	08-D	40	35		NATURE/natur						
		1-1241965-7	7	-	35	30		NATURE/natur						
		0-1241965-7	7	-	35	30		NATURE/natur						
		2-1241965-6	6	06-D	30	25		NATURE/natur	UL94V-2	B	B	△△△		
		2-1241965-5	5	05-B	25	20		NATURE/natur						
		0-1241965-5	5	-	25	20		NATURE/natur						
		0-1241965-4	4	04-C	20	15		NATURE/natur						
		9-1241965-2	2	-	10	5		NATURE/natur						
		5-1241965-2	2	02-B	10	5		BLACK/schwarz						
		4-1241965-2	2	02-I	10	5		RED						
		3-1241965-2	2	02-G	10	5		BLUE/blau						
		0-1241965-2	2	02-A	10	5		NATURE/natur						
		2-1241965-7	7	07-C	35	30		NATURAL	PA6 GF15 UL94V-2	B	A	△△△		
		1-1241965-6	6	06-C	30	25		NATURAL		B	B	△△△		
		0-1241965-6	6	06-A	30	25		NATURAL		B	B	△△△		
		5-1241965-3	3	-	15	10		NATURAL		B	B	△△△		
		0-1241965-3	3	-	15	10		NATURAL		B	B	△△△		
		6-1241965-2	2	02-E	10	5		NATURAL		B	A	△△△		
		8-2178600-2	2	02-C	10	5		NATURAL	PA6 GF15 UL94V-2	B	1	△△△		
		5-2178600-2	2	02-B	10	5		BLACK		B	B	△△△		
		4-2178600-2	2	02-I	10	5		RED		B	B	△△△		
		3-2178600-2	2	02-G	10	5		BLUE		B	B	△△△		
		0-2178600-2	2	02-A	10	5		NATURAL		B	B	△△△		
		2-1241965-7	7	07-C	35	30		NATURAL	PA6 UL94V-2	B	A	△△△		
		1-1241965-6	6	06-C	30	25		NATURAL		B	1	△△△		
		0-1241965-6	6	06-A	30	25		NATURAL		B	1	△△△		
		5-1241965-3	3	-	15	10		NATURAL		A	1	△△△		
		0-1241965-3	3	-	15	10		NATURAL		B	1	△△△		
		6-1241965-2	2	02-E	10	5		NATURAL		B	A	△△△		
		5-2178029-5	5	-	25	20		GREEN	PA66 UL94V-0	B	1	△△△		
		2-2178029-5	5	-	25	20		BLACK		B	A	△△△		
		4-2178029-4	4	-	20	15		NATURAL		B	1	△△△		
		9-2178029-3	3	-	15	10		YELLOW		B	A	△△△		
		1-2178029-3	3	-	15	10		NATURAL		B	B	△△△		
		0-2178029-3	3	-	15	10		NATURAL		B	A	△△△		
		5-2178029-2	2	02-B	10	5		NATURAL		B	A	△△△		
		4-2178029-2	2	02-I	10	5		NATURAL		B	1	△△△		
		3-2178029-2	2	02-K	10	5		NATURAL		B	1	△△△		
		2-2178029-2	2	02-B	10	5		BLACK		B	A	△△△		
		1-2178029-2	2	02-I	10	5		RED		B	A	△△△		
		0-2178029-2	2	02-K	10	5		GREEN		B	A	△△△		
		PART NO., POS., RAST S DIM A DIM B COLOUR Bestell.-Nr. Pol. Rast S Maß A Maß B Farbe												
		MATERIAL LOCKING LATCH REV. MATED WITH Farbe Rasthaken Rev. Gegenstecker												

SPECIAL VERSIONS SEE SHEET 3 OF 3



SWAGED KEYING RIB
Abgeschliffene Kodierrippe

THIS DRAWING IS A CONTROLLED DOCUMENT. DATE: 03 JUL 2017
 K. Munn 07-NOV-06
 K. Munn 07-NOV-06
 L. Klöpper
 DIMENSIONAL TOLERANCES PER ISO 2768-MS
 UNLESS SPECIFIED OTHERWISE
 DIMENSIONS IN mm
 DIMENSIONS IN INCHES
 DIMENSIONS IN MILLIMETERS
 DIMENSIONS IN INCHES
 DIMENSIONS IN MILLIMETERS
 DIMENSIONS IN INCHES
 DIMENSIONS IN MILLIMETERS

TE Connectivity
 2-12 POS. STANDARD THER HSG
 WITH EXTERIOR LOCKING
 00779 ©=1241965
 SCALE 5:1 SHEET 2 OF 3 REV 833

LOC	DATE	REVISIONS	DATE	BY	APP
A1	-	SEE SHEET 1			

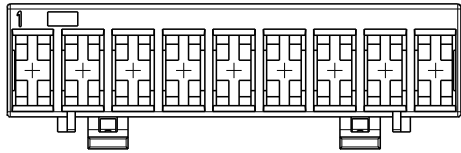
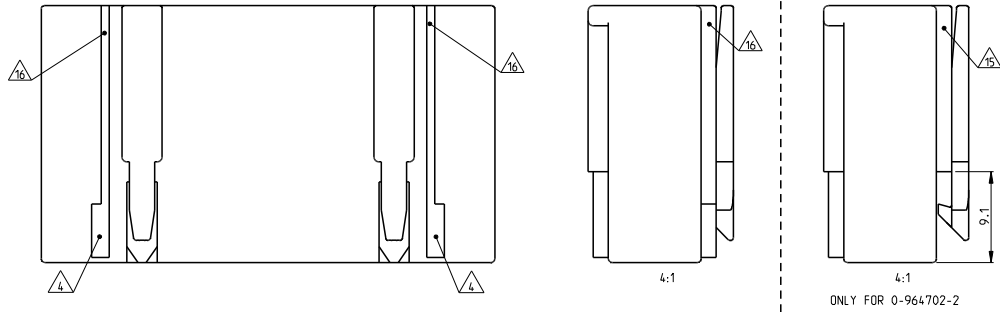
△	2322912-8	8	08-D	4.0	35	BLUE	PA66 UL94 V0 GWT 750	B	1	△ △
△	2322912-7	7	07-C	35	30	GREY		B	1	△ △
△	2322912-6	6	06-D	30	25	BLUE	PA66 UL94 V0 GWT 750	B	1	△ △
△	2322912-3	3	-	15	10	YELLOW		B	1	△ △
△	2322912-2	2	02-C	10	5	GREY	PA66 UL94 V0 GWT 750	B	1	△ △
△	3-124.1965-4	4	-	20	15	NATURAL		E	1	△ △
	2-124.1965-4	4	-	20	15	NATURAL	PA66 UL94 V0 GWT 750	E	A	△ △
	1-124.1965-4	4	04-C	20	15	NATURAL		E	A	△ △
	8-124.1965-2	2	02-C	10	5	NATURAL	CT1350	E	A	△ △
	4-124.1965-7	7	-	35	30	NATURAL		E	A	△ △
△	5-124.1965-7	7	07-C	35	30	NATURAL	CT1350	E	1	△ △
△	5-124.1965-5	5	05-B	25	20	NATURAL		E	1	△ △
	PART NO.	POS.	RAST 5	DIM A	DIM B	COLOUR	MATERIAL	LOCKING LATCH	REV.	MATED WITH

SPECIAL VERSION: UL94 V0 & GWT 750

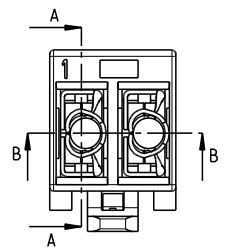
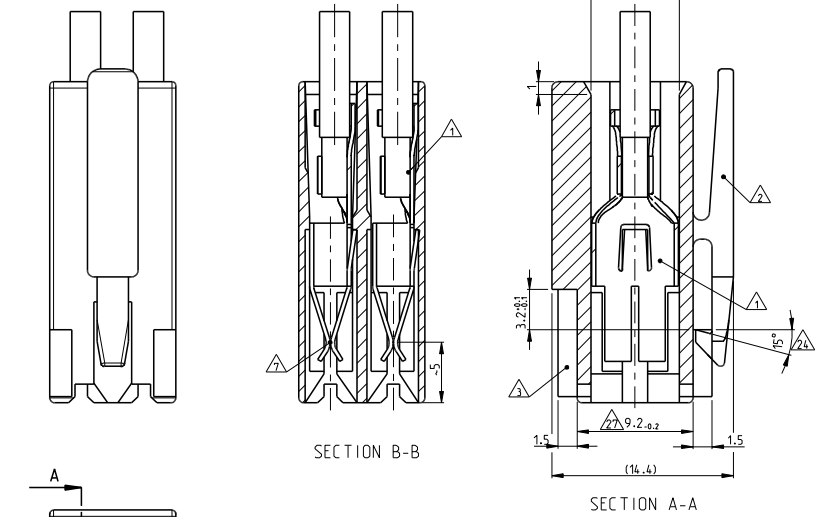
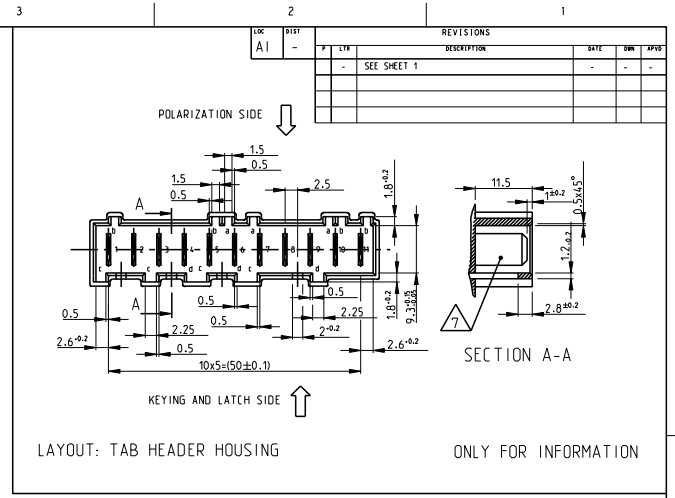
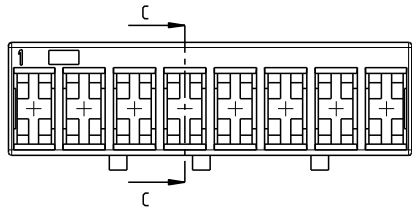
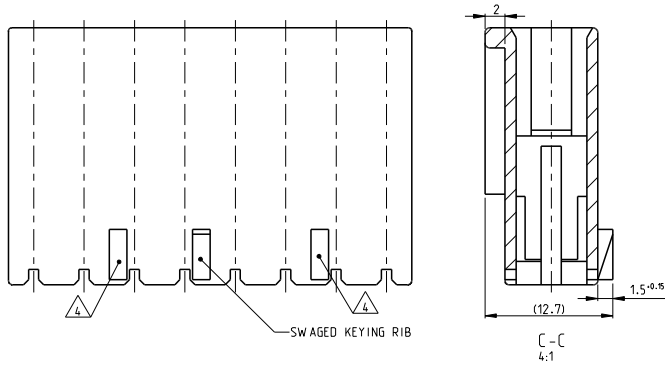
KEYING PLAN SEE SHEET 2 OF 4

THIS DRAWING IS A CONTROLLED DOCUMENT.		DATE: 18 JUL 2017	TE Connectivity	
DRAWN BY: M. Munz		DATE: 07-NOV-06	2-12 POS. STANDARD TIMER HSG WITH EXTERIOR LOCKING	
CHECKED BY: M. Munz		DATE: 07-NOV-06	SHEET: 3 OF 4	
DESIGNED BY: T. Kienner		DATE: -	DRAWING NO: 100779	
DIMENSIONAL TOLERANCES UNLESS OTHERWISE SPECIFIED:		PRODUCT SPEC: 208-180L0	RESTRICTED TO: -	
D. PLC ±0.1		APPLICATION SPEC: -	SCALE: 5:1	
F. PLC ±0.01		FINISH: -	SHEET: 3 OF 4	
H. PLC ±0.001		ANGLE: -	CUSTOMER DRAWING	
MATERIAL: TBD		HEIGHT: -	B33	

SPECIAL VERSIONS $\triangle 15$ $\triangle 16$
 9 POS STD. TIMER HSG. WITH TANGLING PROTECTION



SPECIAL VERSION $\triangle 18$
 8 POS SPECIAL STD. TIMER HSG.



THIS DRAWING IS A CONTROLLED DOCUMENT.		DATE: 08 JUL 2017	TE Connectivity
DRAWN BY: Kishor M.		DATE: 07-NOV-06	
CHECKED BY: K. Munz		DATE: 07-NOV-06	
DESIGNED BY: Tilo Klenger		DATE: 07-NOV-06	
DIMENSIONAL UNIT: mm		PRODUCT SPEC: 2-12 POS. STANDARD TIMER HSG WITH EXTERIOR LOCKING	
TOLERANCES UNLESS OTHERWISE SPECIFIED: ±0.2		STYL: 00779	DRWING NO: 124.1965
MATERIAL: TBD		SCALE: 5:1	SHEET 4 OF 4
FINISH: -		Customer Drawing	REV B33