

PRESSURE TRANSDUCERS WITH AMP.

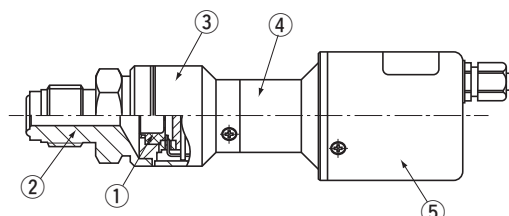
PA-930-A



FEATURES

- Absolute type model for PA-930 series
- Suitable for high temperature media (150 °C)
- Compact and light weight due to original heat insulation technology
- High corrosion resistant SUS 316L port and nickel alloy sensor module

INTERNAL STRUCTURE



	Part name	Material
①	Sensor module	Nickel alloy
②	Pressure port	SUS316L
③	Pipe	SUS304
④	Joint	PBT (Polybutyleneterephthalate)
⑤	Cover	Aluminum

MODEL NUMBER DESIGNATION

PA-930-202A-VC

Series name

Rated pressure range

102 : 0 ~ 100 kPa abs
202 : 0 ~ 200 kPa abs

Pressure port
VC : 9/16-18UNF

Pressure reference
A : Absolute

LIST OF MODEL NUMBERS

(kPa) Rated pressure range	Pressure reference	Absolute
	Pressure port	9/16-18UNF
0 ~ 100 (abs)		PA-930-102A-VC
0 ~ 200 (abs)		PA-930-202A-VC

※Verify the above model numbers when placing orders.

PA-930-A

PRESSURE TRANSDUCERS WITH AMP.

STANDARD SPECIFICATIONS

- Unless otherwise specified, the specs are defined at a pressure port temperature of 125 ± 5 °C and at an ambient temperature of 25 ± 5 °C and excitation voltage of 24 V DC.

Item		Model number	PA-930-A		
			102A	202A	
General specifications	Pressure reference		Absolute		
	Rated pressure range	kPa	100 (abs)	200 (abs)	
	Maximum pressure	kPa	300 (abs)		
	Break-down pressure	kPa	300 (abs)		
	Pressure medium		Corrosive gases/liquids compatible with SUS 316L and nickel alloy		
	Operating / Compensated	°C	0 ~ 50 (Circuit Board) 0 ~ 150 (Pressure port) / 100 ~ 150 (Pressure port)		
	Operating humidity	%RH	35 ~ 85 (No condensation)		
	Storage temp.	°C	- 20 ~ 70 (Atmospheric pressure, humidity 65 %RH maximum)		
	Insulation resistance	MΩ minimum	50 (125 V DC)		
	Dielectric strength		125 V DC, 60 s (Leakage current 1 mA maximum)		
	Pressure port		9/16-18UNF		
	Net weight	g	Approx. 140		
Power	Supply voltage	V DC	12 ~ 24 \pm 10 %		
	Ripple content	maximum	10 % (P-P)		
	Consumption current	maximum	20 mA		
Analog output	Output voltage	V DC	1 ~ 5		
	Zero voltage	V ※1	1 \pm 0.04		
	Span voltage	V ※1	4 \pm 0.04		
	Output current		1 mA max. (Load resistance 5 kΩ min.)		
	Linearity/Hysteresis	%F.S.	\pm 0.5		
	Thermal error	ZERO		\pm 0.3 %F.S./°C (100 to 150 °C, Reference temp. at 125 °C)	\pm 0.2 %F.S./°C (100 to 150 °C, Reference temp. at 125 °C)
		SPAN		\pm 0.2 %F.S./°C (100 to 150 °C, Reference temp. at 125 °C)	
Response		Approx. 2 ms.			

- ※1 : Pressure port temperature : 125 °C
Ambient temperature : 25 °C

PA-930-A

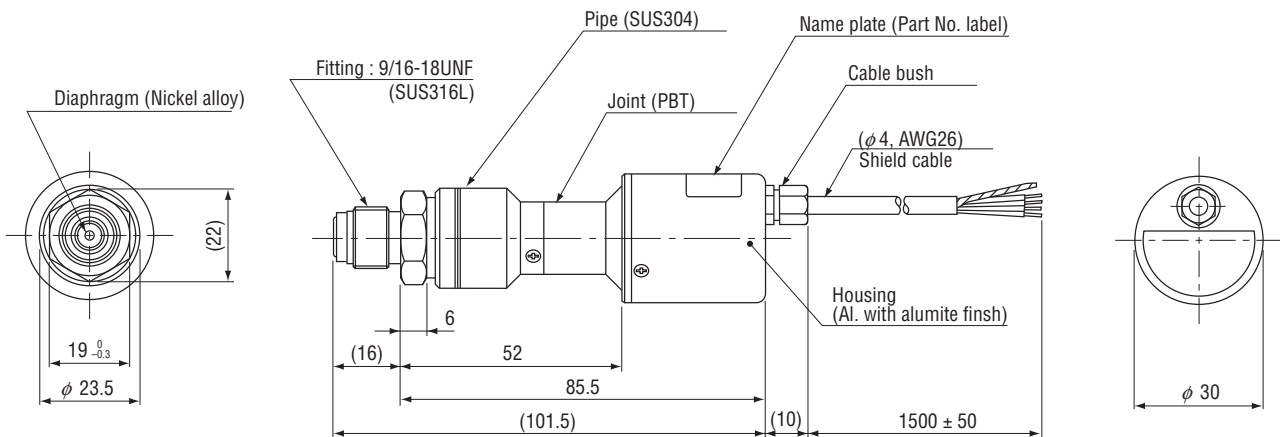
PRESSURE TRANSDUCERS WITH AMP.

ENVIRONMENTAL CHARACTERISTICS

Test item	Test conditions (At 25 ± 5 °C)	Permissible change
Vibration	10 ~ 500 Hz, 1.5 mm maximum/98.1 m/s ² , 3 directions for 2 hours each	Zero voltage, Span voltage: ± 1 %FS. maximum each
Shock	490 m/s ² , 3 directions for 3 times each	
Pressure cycling	0 ~ Rated pressure, 10 ⁶ cycles	
Moisture resistance	40 °C, 90 ~ 95 %RH, 240 hrs.	

OUTLINE DIMENSIONS

Unless otherwise specified, tolerance : ± 0.5 (Unit: mm)



Wire color	Connection
Red	Power ⊕
White	Output
Black	Common
Green	N.C.
Shield	Fitting

INTERNAL ELECTRICAL SCHEMATICS

