

SPECIFICATIONS

SPEC.No.EN216075

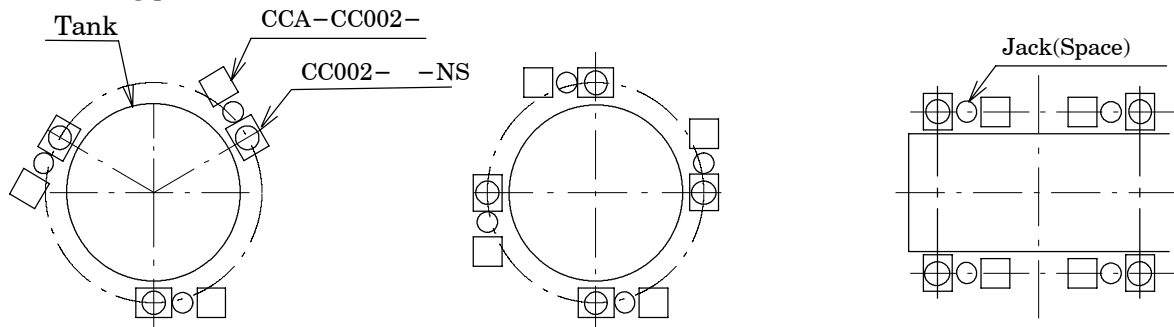
1/2

Check rod type mounting attachment with slide stop mechanism for CC002-10T, 20T, 25T and 30T-NS

Applicable load cell	: CC002-10T, 20T-NS (CCA-CC002-10T/20T) CC002-25T, 30T-NS (CCA-CC002-25T/30T)
Allowable horizontal load	: 60 %R.C.
Allowable horizontal moving length	: ± 7 mm (without any direction) (When installing, to confirm the horizontal space is required.)
Allowable lifting up load	: 50 %R.C. (It is necessary to fix the bolt for stop floating to the pole by using the bracket.)
Bolt for fixing use	: Size M24 Recommended tightening torque 341 N·m {34.8 kgf·m} (Strength division 4.8 or equivalent)
Material	: SS material
Surface treatment	: Chrome plating
Accessory	: Bolt for stop floating 1 piece Washer 8 pieces Eyebolt 2 pieces Tacking bolt 2 pieces Instruction manual 1 piece

Remarks

- 1) Please make sure to see the instruction manual (No. EN293-1010) before the mounting.
- 2) Please manage the fixation of a fixed bolt (dimension P of the outline drawing) by the tightening torque.
- 3) At the shipment, the top plate is fixed in the base plate with the tacking bolt.
- 4) To lift up in the mounting process, use the eyebolt of the pole.
- 5) Please prepare the passing hole (dimension L of the outline drawing) for the stop floating bolt in the bracket.
- 6) Secure the space around the tank bracket for using the jack.
- 7) Please examine the horizontal load by the stir when you establish the stir machine as an annex.
Basically, I will recommend establishing the stay rod as an annex to avoid the vibration of the tank.
- 8) R.C. means rated capacity of the load cell.
- 9) Load cell CC002- -NS has the direction for mounting to the tank. (Please refer to the figure below).
- 10) Mounting plate AIC-005 is needed for the load cell.



Example of supporting three points

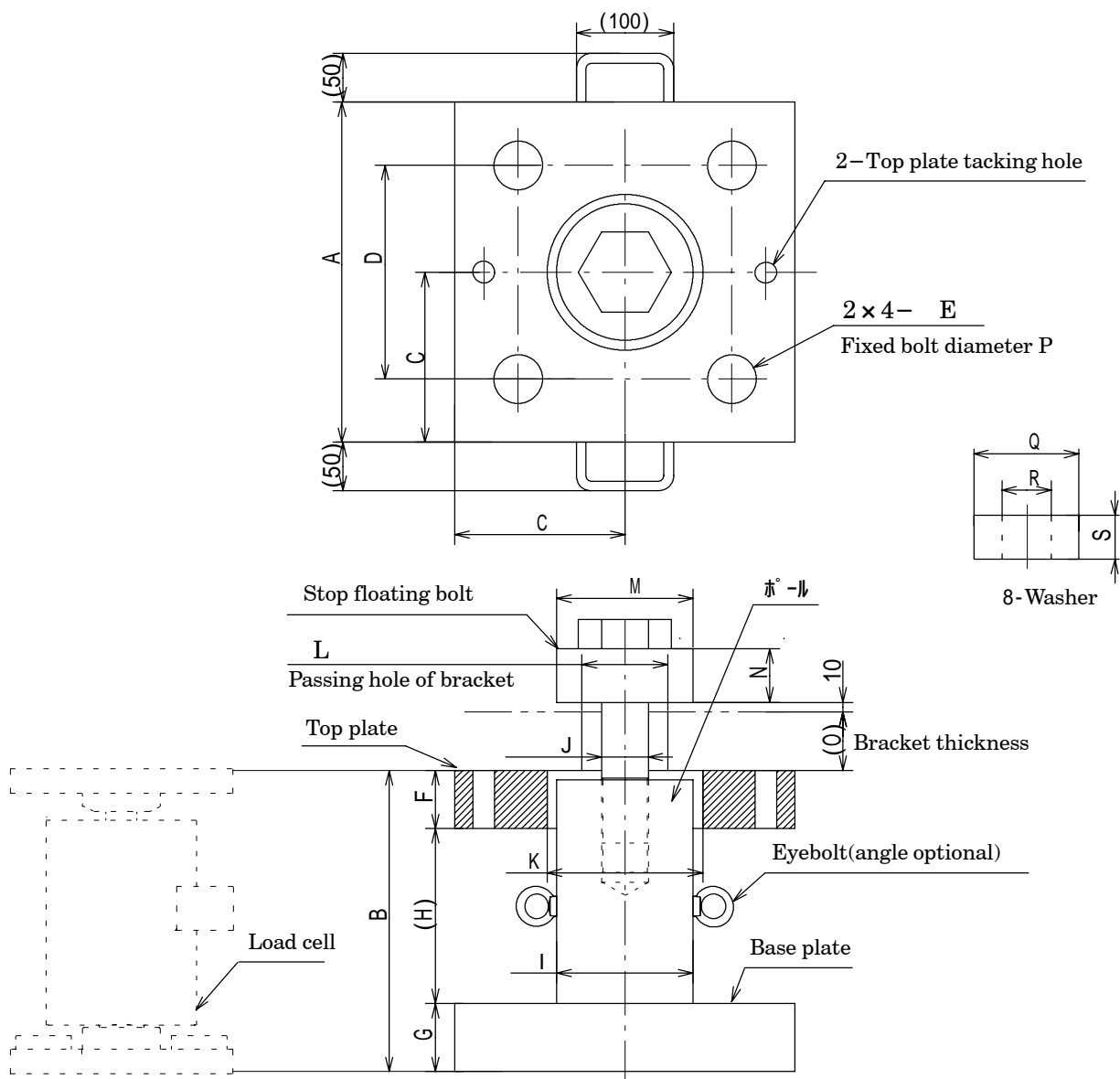
Example of supporting four points

SPECIFICATIONS

Mounting attachment with slide stop mechanism CCA-CC002- -NS

SPEC.No.EN216075-A

2/2



Outline dimensions

Unit : mm

P/N	Applicable load cell	A	B	C	D	E	F	G	H	I	J	K	L	M	N	O
CCA-CC002-10T/20T	CC002-10T,20T-NS	200	199	100	140	36	32	32	135	94	M30	114	60	120	20	30 ± 5
CCA-CC002-25T/30T	CC002-25T,30T-NS	220	199	110	150	36	42	42	115	102	M30	122	60	120	20	30 ± 5

P/N	P	Q	R	S	Weight (Approx.kg)
CCA-CC002-10T/20T	M24	56	26	10	30
CCA-CC002-25T/30T	M24	56	26	10	42

Specifications and outline dimensions and so on which have printed may subject to change for the purpose of improvement.