

SPECIFICATIONS

Mounting Attachment with Slide
Stop Mechanism CCA-CMP1-※-S

SPEC.No.EN216086-E

1/4

Check rod type mounting attachment
with slide stop mechanism for CMP1-250K~2T

- P/N : CCA-CMP1-250K/2T-S
- Applicable load cell : CMP1-250K~2T
- Allowable horizontal load : ± 11.77 kN {1.2 tf}
- Allowable horizontal moving length : ± 5 mm (No directionality) (Refer to Note-3)
- Allowable lifting load : 9.806 kN {1 tf}
- (Please prepare the clearance hole of a fall prevention fitting on a bracket.
Diameter of recommended clearance hole : $\phi 45$ or more)
- Capacity of thread for level adjustment : 9.806 kN {1 tf}
- Material : SUS304 or equivalent
- Weight : Approx. 7 kg
- Accessories : Bearing plate 1 piece
Guide plate 1 piece
Hexagon socket head cap screw(M6×L10) 4 piece
Instruction Manual 1 piece
- Options : Dummy load cell P/N : CCAD-CMP1-250K/2T-S

- P/N : CCA-CMP1-5T-S
- Applicable load cell : CMP1-5T
- Allowable horizontal load : ± 29.42 kN {3 tf}
- Allowable horizontal moving length : ± 5 mm (No directionality) (Refer to note-3)
- Allowable lifting load : 24.52 kN {2.5 tf}
- (Please prepare the clearance hole of a fall prevention fitting on a bracket.
Diameter of recommended clearance hole : $\phi 45$ or more)
- Capacity of thread for level adjustment : 24.52 kN {2.5 tf}
- Material : SUS304 or equivalent
- Weight : Approx. 8.5 kg
- Accessories : Bearing plate 1 piece
Guide plate 1 piece
Hexagon socket head cap screw(M6×L10) 4 piece
Instruction Manual 1 piece
- Options : Dummy load cell P/N : CCAD-CMP1-5T-S

SPECIFICATIONS

Mounting Attachment with Slide
Stop Mechanism CCA-CMP1-※-S

SPEC.No.EN216086-E

2/4

- P/N : CCA-CMP1-10T-S
 - Applicable load cell : CMP1-10T
 - Allowable horizontal load : ± 58.84 kN {6 tf}
 - Allowable horizontal moving length : ± 5 mm (No directionality) (Refer to note-3)
 - Allowable lifting load : 49.03 kN {5 tf}

(Please prepare the clearance hole of a fall prevention fitting on a bracket.
Diameter of recommended clearance hole : $\phi 45$ or more)

 - Capacity of thread for level adjustment : 49.03 kN {5 tf}
 - Material : SUS304 or equivalent
 - Weight : Approx. 17 kg
 - Accessories : Bearing plate 1 piece
Guide plate 1 piece
Hexagon socket head cap screw (M6×L10) 4 piece
Instruction Manual 1 piece
 - Options : Dummy load cell P/N : CCAD-CMP1-10T-S

- P/N : CCA-CMP1-20T-S
 - Applicable load cell : CMP1-20T
 - Allowable horizontal load : ± 117.7 kN {12 tf}
 - Allowable horizontal moving length : ± 5 mm (No directionality) (Refer to note-3)
 - Allowable lifting load : 98.07 kN {10 tf}

(Please prepare the clearance hole of a fall prevention fitting on a bracket.
Diameter of recommended clearance hole : $\phi 45$ or more)

 - Capacity of thread for level adjustment : 98.07 kN {10 tf}
 - Material : SUS304 or equivalent
 - Weight : Approx. 24 kg
 - Accessories : Bearing plate 1 piece
Guide plate 1 piece
Hexagon socket head cap screw (M10×L16) 4 piece
Instruction Manual 1 piece
 - Options : Dummy load cell P/N : CCAD-CMP1-10T-S

SPECIFICATIONS

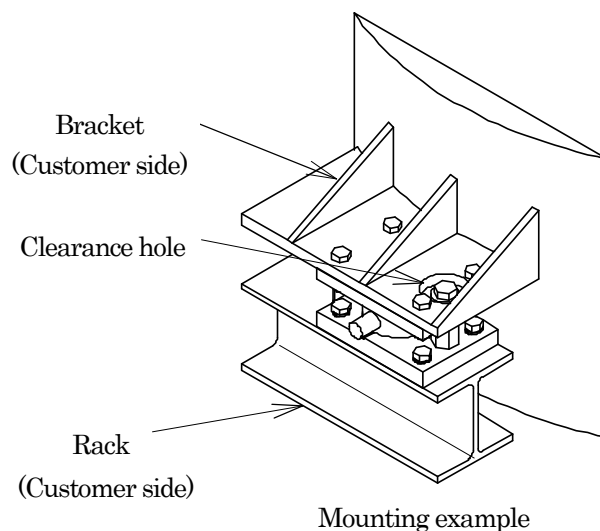
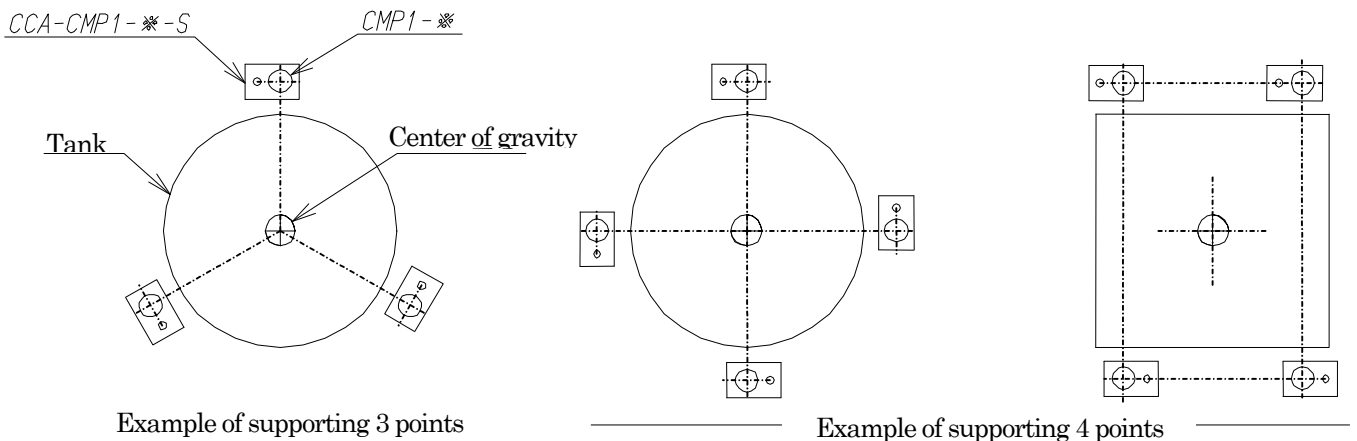
Mounting Attachment with Slide Stop Mechanism CCA-CMP1-※-S

SPEC.No.EN216086-E

3/4

Remarks

- 1) Please prepare the clearance hole of the fall prevention fitting at the part of a tank bracket.
The horizontal moving length is considerable on the size of the clearance hole.
A recommended diameter of a clearance hole is described to the specification column.
- 2) Installed height recommends the vicinity of the tank center of gravity position.
- 3) An accurate measurement cannot be made when the measurement is made in the condition of the mounting attachment touching to the top plate. After the installation, please confirm if the pole of the mounting attachment is center of the slide stopping hole.
- 4) There is no automatic alignment function. Therefore, there is a possibility that the mounting attachment touch to the top plate when a normal measurement cannot be made after a big earthquake, etc. Please move the tank and, and adjust the pole of mounting attachment to become the center of the slide stopping hole when touching.
- 5) Secure the space around the tank bracket for using the jack.
- 6) Establishing the stay rod as an annex is recommended to avoid the vibration by the stir machine.
- 7) The level adjustment screw is used when the shim plate is put between the bracket and top plate, and the output balance of each load cell is adjusted. Don't use this screw except when the level is adjusted.

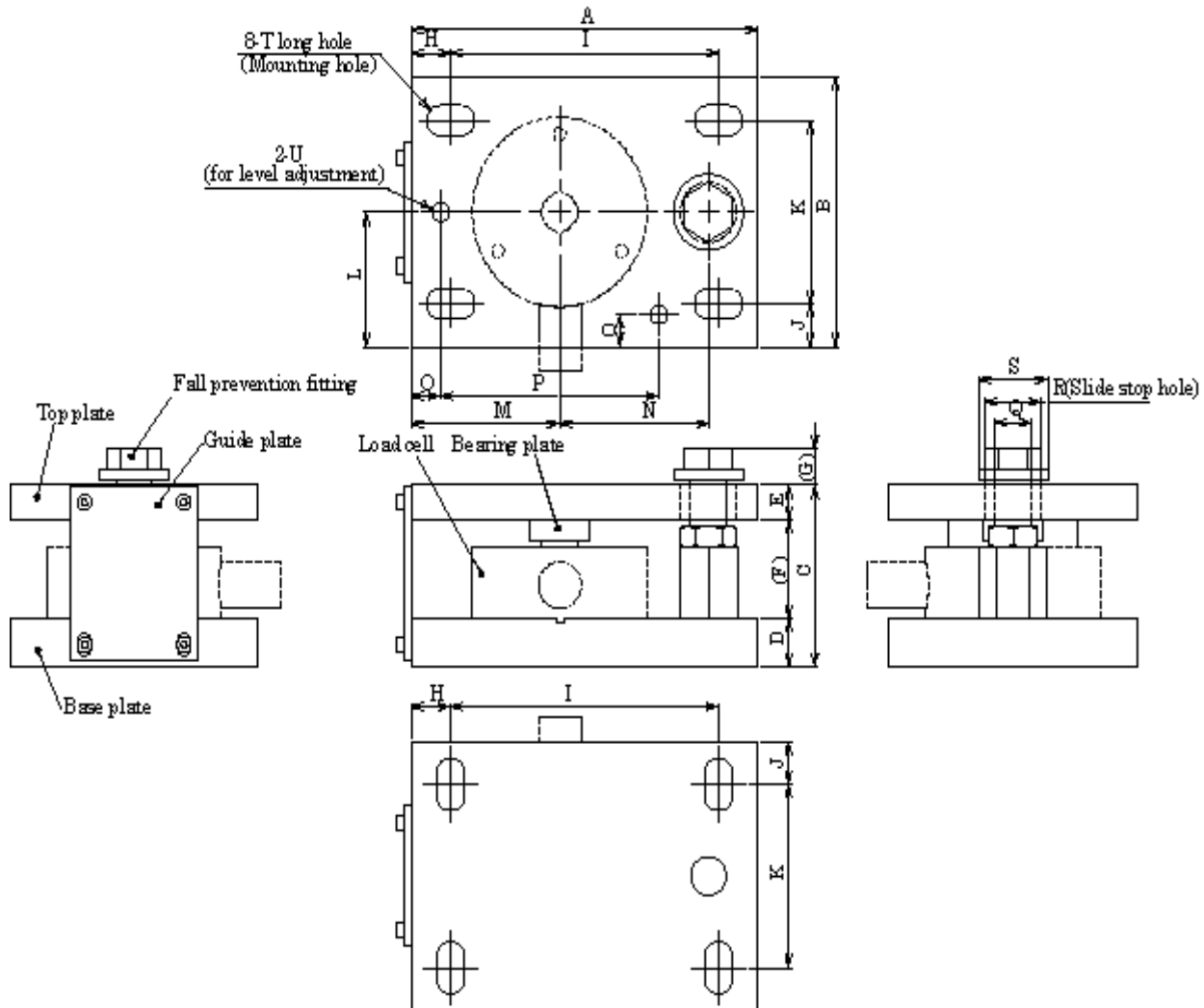


SPECIFICATIONS

Mounting Attachment with Slide Stop Mechanism CCA-CMP1-※-S

SPEC.No.EN216086-E

4/4



Outline dimension table

Unit: mm

型式	A	B	C	D	E	F	G	H	I	J	K
CCA-CMP1-250K/2T'S	175	125	84	22	16	46	17	20	135	20	85
CCA-CMP1-5T'S	175	125	102.5	22	19	61.5	25	20	135	20	85
CCA-CMP1-10T'S	210	150	131.5	30	30	71.5	32	25	160	25	100
CCA-CMP1-20T'S	265	150	141	35	30	76	40.7	25	215	25	100

型式	L	M	N	O	P	Q	R	S	T	U
CCA-CMP1-250K/2T'S	62.5	75	75	15	110	φ18	φ28	φ35	24×14	M10
CCA-CMP1-5T'S	62.5	75	70	15	110	φ22	φ32	φ45	24×14	M12
CCA-CMP1-10T'S	75	85	80	20	125	φ26	φ36	φ50	32×22	M16
CCA-CMP1-20T'S	75	105	100	20	140	φ32	φ42	φ55	32×22	M24

※Specifications and outline dimensions and so on which have printed may subject to change for the purpose of improvement without notice.