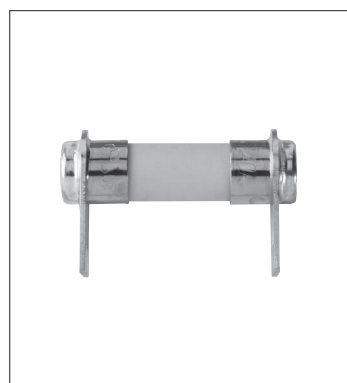


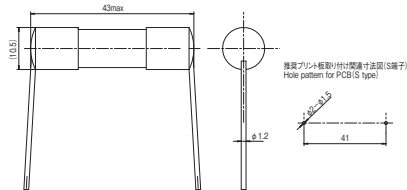


PS E (50~80A) C AL US (0.8~80A)

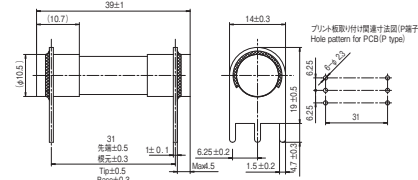
安全規格: UL file # E46712 (0.8A~50A)  
 # E343619 (63A~80A)  
 Standard for Safety: UL file # E46712 (0.8A~50A)  
 # E343619 (63A~80A)  
 CCC規格についてはお問合せ下さい  
 CCC Standard for Safety: please contact us



GAC1ヒューズ(S端子) GAC1 fuse (S type)



GAC1ヒューズ(P端子) GAC1 fuse (P type)



※端子形状についてはご相談ください。  
 Please consult us regarding the terminal type.

通電容量 Carrying Capacity	溶断規格 Clearing Time
100%	200% 2分以内 (within 2 minutes)

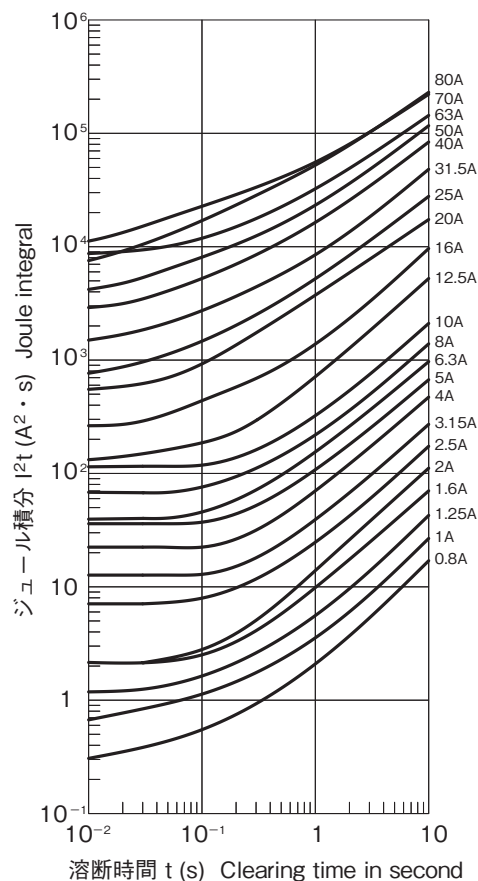
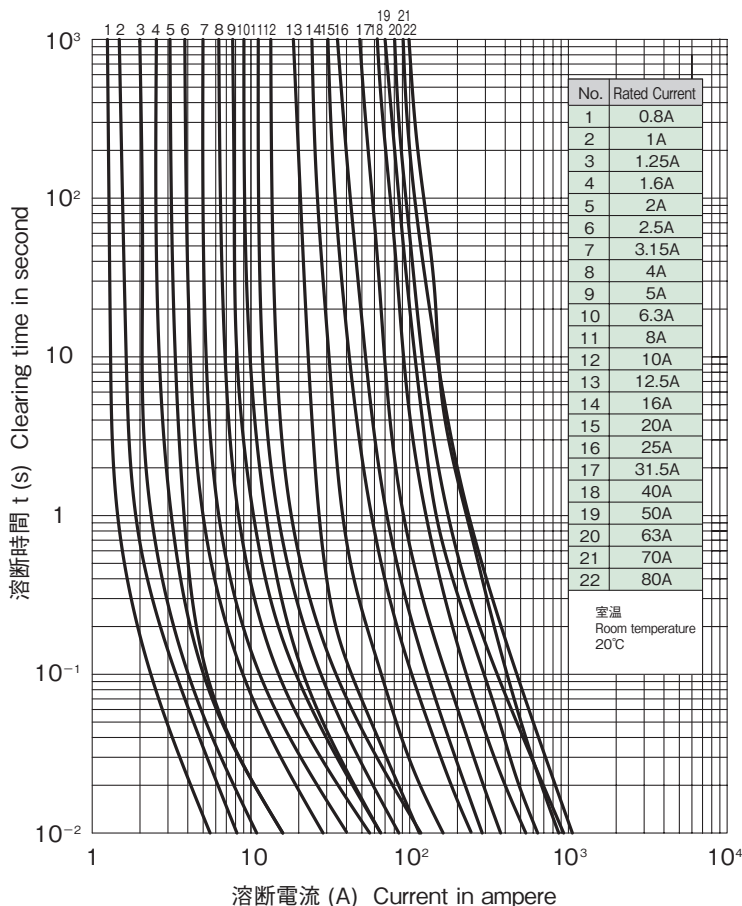
□はPもしくはSのアルファベット □ is letter P, or S  
 P:プリント基板実装端子(板型)  
 S:プリント基板実装端子(ストレート型)  
 P: Printed circuit board mounting terminal (plate type)  
 S: Printed circuit board mounting terminal (straight type)

品名 Cat. No.	定格電流 Rated Current	定格遮断容量 Breaking Capacity	公称値 Nominal Value		
			ヒューズ抵抗値 <sup>#1</sup> Typ. Resistance <sup>#1</sup>	溶断I <sup>2</sup> t <sup>#2</sup> Joule Integral <sup>#2</sup>	
GAC1 0.8A: □	0.8A	AC 600V 10,000A	1.03Ω	0.31A <sup>2</sup> ·s	
GAC1 1A: □	1A		0.73Ω	0.67A <sup>2</sup> ·s	
GAC1 1.25A: □	1.25A		0.55Ω	1.2A <sup>2</sup> ·s	
GAC1 1.6A: □	1.6A		0.41Ω	2.2A <sup>2</sup> ·s	
GAC1 2A: □	2A		0.30Ω	2.2A <sup>2</sup> ·s	
GAC1 2.5A: □	2.5A		0.22Ω	7.1A <sup>2</sup> ·s	
GAC1 3.15A: □	3.15A		0.16Ω	13A <sup>2</sup> ·s	
GAC1 4A: □	4A		0.11Ω	22A <sup>2</sup> ·s	
GAC1 5A: □	5A		DC 125V 1,000A	0.84Ω	36A <sup>2</sup> ·s
GAC1 6.3A: □	6.3A		0.37Ω	40A <sup>2</sup> ·s	
GAC1 8A: □	8A	0.27Ω	68A <sup>2</sup> ·s		
GAC1 10A: □	10A	0.20Ω	110A <sup>2</sup> ·s		
GAC1 12.5A: □	12.5A	7.8mΩ	130A <sup>2</sup> ·s		
GAC1 16A: □	16A	5.7mΩ	260A <sup>2</sup> ·s		
GAC1 20A: □	20A	3.3mΩ	520A <sup>2</sup> ·s		
GAC1 25A: □	25A	AC 500V 1,500A	2.8mΩ	660A <sup>2</sup> ·s	
GAC1 31.5A: □	31.5A	DC 125V 1,000A	1.8mΩ	1,400A <sup>2</sup> ·s	
GAC1 40A: □	40A	1.5mΩ	2,600A <sup>2</sup> ·s		
GAC1 50A: P	50A	AC 250V 1,500A	1.4mΩ	3,500A <sup>2</sup> ·s	
GAC1 63A: P	63A	DC 125V 1,000A	1.3mΩ	8,000A <sup>2</sup> ·s	
GAC1 70A: P	70A	1.1mΩ	10,000A <sup>2</sup> ·s		
GAC1 80A: P	80A	AC 250V 2,500A DC 125V 1,000A	1.0mΩ	6,300A <sup>2</sup> ·s	

※1: コード時(定格電流の10%以下にて測定)  
 at 10% max. rated current  
 ※2: 溶断I<sup>2</sup>t値は、I<sup>2</sup>t特性の1msの値です。  
 Joule Integral is the value of 1ms of I<sup>2</sup>t characteristics.

■ 溶断特性 Time / Current Characteristics

■ I<sup>2</sup>t 特性 I<sup>2</sup>t Characteristics



■ カタログの記載内容は予告なく変更することがありますので、ご注文に際してはご確認ください。  
 ■ Information in this catalog is subject to change without notice. Please confirm product information when ordering.