

RT6925

2021/09/13

General Specifications

Motor Structure: 3-phase 2pole

Motor Protection: Thermal Protect

Insulation Resistance: 100MΩ or over with a DC500V Megger

Dielectric Withstand Voltage: AC1800V 1s

Allowable Ambient Temperature Range:

-20deg.C ~ +60deg.C

(Operating)

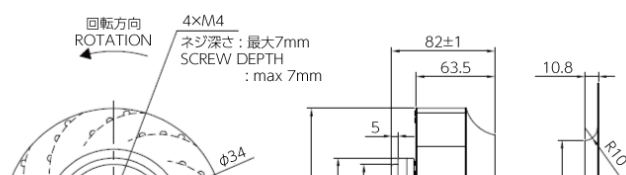
-40deg.C ~ +70deg.C

(Storage)

*no condensation permissible state practice.

Expected Life

*Failure rate 10% 25deg.C 25,000 hours (65%RH)

Outline**Material**

Impeller: Steel

Bearing: Ball Bearings

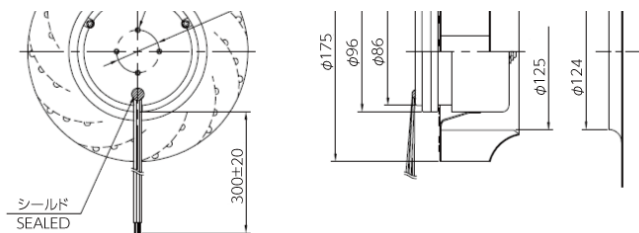
Characteristic Curves

ミネベアミツミ株式会社

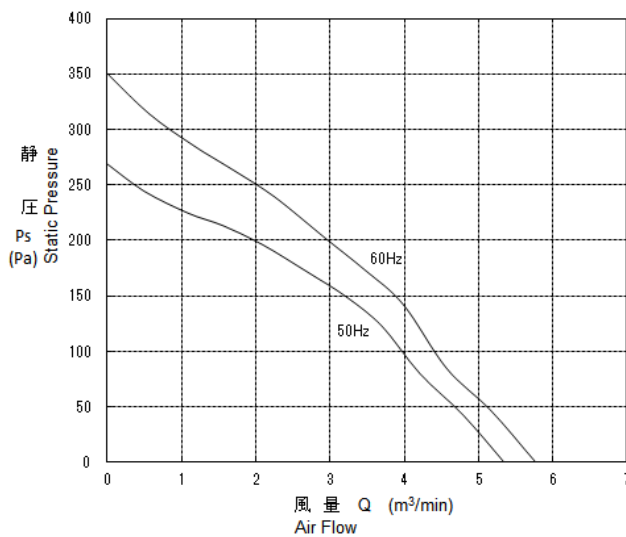
Copyright©MinebeaMitsumi Inc. All right reserved.

RT6925

2021/09/13



CHARACTERISTIC CURVES



Specifications

Model	Product No	Phase	Nominal Voltage [V]	Operating Voltage lower limit [V]	Operating Voltage upper limit [V]	Frequency [Hz]
RT6925-0220W-B30F-S	00	3	200	180	220	50
RT6925-0220W-B30F-S	00	3	200	180	220	60

Model	Starting Voltage [V]	Current [A]	Input Power [W]	Speed [min-1]	Max. Air Flow [m3/min]	Fan Diameter [mm]	Fan Hight [mm]
RT6925-0220W-B30F-S	130	0.150	48.0	2700	5.30	175.0	82.0
RT6925-0220W-B30F-S	130	0.200	72.0	2950	5.80	175.0	82.0

Model	Mass [g]
RT6925-0220W-B30F-S	1840
RT6925-0220W-B30F-S	1840